

Origin and Clinical Applications of Neural Crest-Derived Dental Stem Cells

Yuan ZHU, Ping ZHANG, Ran Li GU, Yun Song LIU, Yong Sheng ZHOU

Over the past few decades, scientific research into neural crest-derived stem cells has progressed rapidly. The migration and differentiation of neural crest-derived stem cells has been an interesting area of research. Stem cells within teeth originating from the embryonic neural crest have attracted increasing attention in clinical and scientific research because they are easy to obtain and have superb stemness. The stem cells within the teeth include dental pulp stem cells (DPSCs), dental follicle stem cells (DFSCs), stem cells from apical papilla (SCAPs), stem cells from human exfoliated deciduous teeth (SHEDs), and periodontal ligament stem cells (PDLSCs). To date, there have been several interesting studies focusing on dental pulp regeneration, neural regeneration and the revascularization for therapeutic applications.

Key words: dental stem cells, dentine/pulp engineering, neural crest cells, neural regeneration, revascularization

Chin J Dent Res 2018;21(2):89–100; doi: 10.3290/j.cjdr.a40435

Because it is difficult for the dental pulp and nerves to regenerate, there is currently no effect treatment for pulpitis and nerve injury. Recently, tissue engineering, including cells, growth factors and scaffolds, has become a popular therapeutic approach for cartilage and bone tissue construction, blood vessel, nerve tissue, skin, and oral tissue engineering. In addition, a vascular network can also provide oxygen and nutrients for transplanted cells. Cell-based therapy is a fundamental part of regenerative medicine. The cell types used for clinical trials are mainly hematopoietic cells and mesenchymal stem cells, and the treatment targets of cell-based therapies are oncology, cardiovascular, neurological, and autoimmune diseases; however, the majority of cell-based therapy clinical trials are in Phase I.

Department of Prosthodontics, Peking University School and Hospital of Stomatology, National Engineering Laboratory for Digital and Material Technology of Stomatology, Beijing Key Laboratory of Digital Stomatology, Beijing, P.R. China.

Corresponding author: Dr Yun Song LIU, Department of Prosthodontics, Peking University School and Hospital of Stomatology, 22# Zhong-guancun South Avenue, HaiDian District, Beijing 100081, P.R. China. Tel: 86 10 82195370; Fax: 86 10 62173402. Email: liuyunsong@hsc.pku.edu.cn, kqliuyunsong@163.com

This work was supported by the National Natural Science Foundation of China (grant numbers 81470769, 81771039) and the Project for Culturing Leading Talents in Scientific and Technological Innovation of Beijing (grant number Z171100001117169).

A major focus of regenerative medicine and tissue engineering involves the use of stem cells. Recently, increasing research into dental stem cells has made it a hotspot in stem cell research. In 2000, scientists first showed that there are stem cells in the dental pulp¹; subsequently Miura et al identified SHEDs in 2003². Subsequently, PDLSCs were identified from human periodontal ligament in 2004³, and then DFSCs were isolated from human dental follicles⁴. Soon afterwards, Sonoyama et al first identified SCAPs from the apical area of extracted teeth in 2006⁵.

These dental stem cells could undergo dentinogenic, osteogenic, chondrogenic, and neurogenic differentiation *in vitro* and have been widely used in tissue regeneration. DPSCs, SHEDs and SCAPs are used for bone regeneration, tooth tissue regeneration, and nerve regeneration *in vivo*. PDLSCs and DFSCs have mainly been investigated for the formation of periodontal tissue structure. The use of these stem cells is a promising strategy for the clinical treatment of many diseases; however, there are some controversial and doubts about the precise origin and clinical applications of dental stem cells. Hall claimed that vertebrate embryos have four germ layers and vertebrates are not triploblastic, but quadroblastic⁶. This viewpoint is different from the germ-layer theory. The neural crest-derived dental stem cells are featured in tissue engineering and regeneration; however, these cells have only been used in

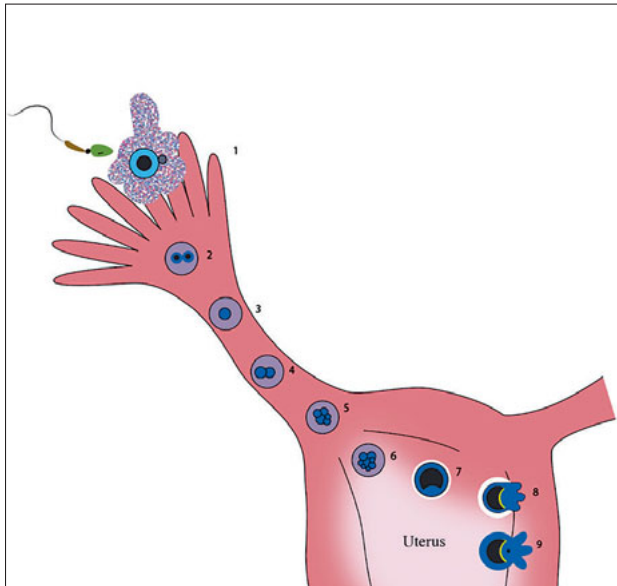


Fig 1 The migration of the zygote. The zygote undergoes cleavage in the first week of embryo development, and then implants in the uterine endometrium and becomes bilaminar. 1: The sperm and egg cell meet in the ampullar portion; 2 – 3: Sperm and egg cell membranes fuse and form a zygote, life begins at the time when the sperm and egg cell fuse; 4 – 6: The zygote undergoes cleavage as it travels down the oviduct and enters the uterus. The morula (number 6 in the figure) is a solid mass of blastomeres that forms when the zygote splits, and then develops into the blastocyst; 7: The blastocyst is a very early-stage embryo that is not yet implanted into the uterine endometrium; 8 – 9: The blastocyst hatches from the zona pellucida and then implants in the uterine endometrium. The trophoblast at the embryonic pole of the blastocyst proliferates to form the invasive syncytiotrophoblast.

cellular and preclinical studies, and have not yet been studied clinically.

In the current review, we discuss our current understanding of the origin and clinical applications of different neural crest-derived dental stem cells.

Origins of the neural crest and neural crest stem cells

The neural crest: The fourth germ layer

As we all know, the neural crest is a group of transient embryonic cells that were first described as the “Zwischenstrang”, because of its origin between the epidermis

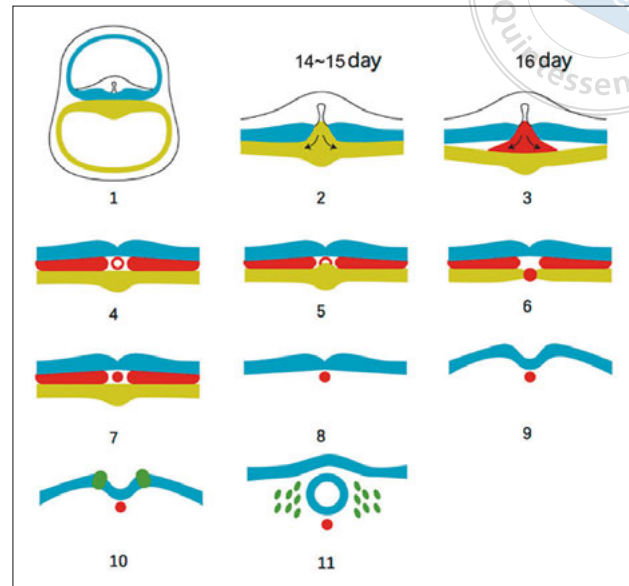


Fig 2 The formation of the trilaminar embryonic disc and neural crest cells. 1: Bilaminar embryonic disc. A primitive streak forms along caudal midline of the bilaminar embryonic disc, and its cranial end expands as a primitive node, which is the position of future oropharyngeal membrane; 2 – 3: Cells ingress and displace the hypoblast to form the definitive endoderm. Soon after, ingressing cells migrate and proliferate between the epiblast and the endoderm to form the mesoderm; gastrulation converts the bilaminar embryonic disc into a trilaminar embryonic disc; 4 – 7: The notochordal process is formed by the extended mesoderm on the 17th day and is hollow. Subsequently, the notochordal process fuses with the endoderm, with the fused position being called the notochordal plate. The notochordal process then separates from the endoderm and changes into a solid rod called the notochord on day 22; 8 – 11: The notochord process and notochord induce the ectoderm to thicken to form the neural plate (NP). The groove gradually deepens and ultimately the folds to meet in the middle line, which converts the groove into a closed tube. The interface between the surface ectoderm and the roof plate of the neural tube is the neural crest. The neural crest cells then migrate to different locations and differentiate into different cells and tissues.

and the neural tube in the neurula-stage chick embryo. Then it was named “neural crest”. Since then, different theories about the neural crest have been proposed, but the most accepted theory was the germ layer theory. In 1817, it was indicated that the blastoderm could develop into the three germ layers, an upper ‘serous’, a lower ‘mucous’, and a middle ‘vessel’ layer. Subsequently, the findings were formulated and expanded that vertebrate embryos were built on this three-layered plan. Later, the germ layer theory was extended from ontogeny into systematics and divided animals into homoplastica, diploblastica, and triploblastica, based on their number of germ layers.

A large number of cells derived from the ectoderm and mesoderm can be produced by the neural crest,

such as neurons, smooth muscle, bone, cartilage, and endocrine cells. Because of this, the three germ layers recognised for almost 180 years since Karl von Baer proposed the germ layer theory could be replaced by four germ layers. Hall claimed that vertebrate embryos comprised four germ layers and that vertebrates were not triploblastic, but quadroblastic⁷. The ectoderm and endoderm are the primary germ layers that appear earliest in the embryo. The mesoderm is a secondary germ layer because it arises following the ectoderm and endoderm's inductive interactions⁸. The mesoderm is recognised as a germ layer because it has the potential to differentiate into mesodermal cell and tissue types. The neural crest arises from the ectoderm, and can give rise to different types of cells and tissues, just like the mesoderm. Mesoderm can differentiate into different cell types. The neural crest can produce more types of cells and tissues than the mesoderm, thus the neural crest can qualify as a germ layer⁸. Thus, the neural crest should be regarded as the fourth germ layer and vertebrates are not triploblastic, but quadroblastic.

Neural crest stem cells (NCSCs)

The neural crest is an ephemeral structure that appears in the early development of embryos. As shown in Figure 1, the zygote undergoes cleavage in the first week of embryo development. On day 5, the blastocyst implants in the uterine endometrium. The embryonic disc is bilaminar, consisting of epiblast and hypoblast layers at 7 days. By 14 days, the embryo expands, and the bilaminar embryonic disc is suspended in the chorionic cavity by a thick connecting stalk. Along the caudal midline of the bilaminar embryonic disc, a primitive streak forms on day 15 and its cranial end expands as primitive node, which is the position of the future oropharyngeal membrane. Epiblast cells then ingress along the primitive streak, and displace the hypoblast to form the definitive endoderm. Soon after, ingressing cells migrate and proliferate between the epiblast and the endoderm, then form the mesoderm. Gastrulation then converts the bilaminar embryonic disc into a trilaminar embryonic disc and the embryo is referred to as a gastrula. By day 17, a notochordal process is formed by the mesoderm, which extends cranially from the primitive node. At the same time, the mesoderm becomes the paraxial, intermediate, and lateral plate mesoderm from the midline to the lateral. The lateral plate mesoderm then begins to split into two layers, the splanchnic mesoderm and the somatic mesoderm; some scattered mesoderm cells are referred to as the mesenchyme. The paraxial mesoderm forms the head mesoderm and somites in the

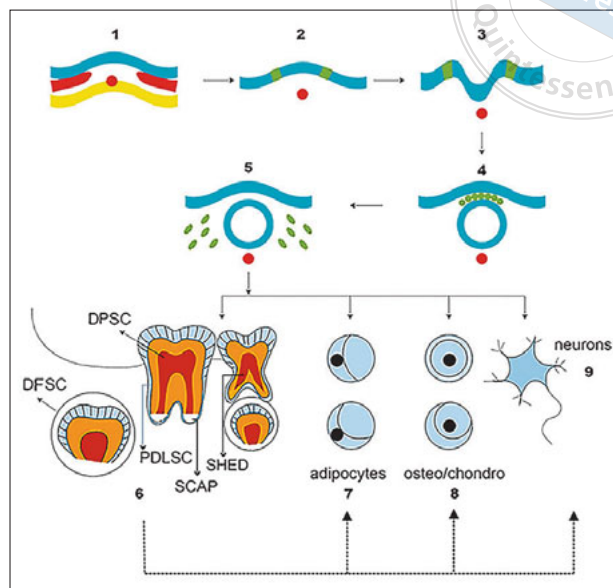


Fig 3 Neural crest cells give rise to multiple cell types and demonstrate the origin and differentiation potentials of dental stem cells. 1 – 5: The formation of neural crest cells; 6: Dental stem cells; the dotted arrow shows the differentiation potential of dental stem cells; 7: Adipocytes; 8: Osteoblasts and chondrocytes; 9: Neurons.

future head and trunk regions, the intermediate mesoderm forms the major organs of the urogenital system and the lateral plate mesoderm forms the body wall and the wall of the gastrointestinal system⁹ (Fig 1).

The notochord is formed by the extended mesoderm. Formation of the neural tube occurs during the neurulation, in which there are two ways to form a neural tube, primary and secondary neurulation. Generally speaking, neurulation is referring to primary neurulation. Neurulation can be subdivided into four stages: formation, shaping and bending of the neural plate (NP), and closure of the neural groove (NG)¹⁰. The notochord induces the ectoderm to get thicker to form the NP at the end of the third week. The NP is surrounded on either side by the neural folds that are derived from the NP; the NG deepens and finally the folds meet in the middle line. The groove converts into a closed tube, forming the neural tube¹¹ (Fig 2).

The interface between the surface ectoderm and the roof plate of the neural tube is the neural crest. Neural crest cells undergo an epithelial-to-mesenchymal transformation (EMT), after which they migrate to different locations and differentiate into different cells and tissues. *In vivo* and *in vitro* experiments revealed that neural crest cells give rise to multiple cell types (Fig 3), including adipocytes¹², neurons¹³, glias^{14,15}, smooth muscle, chondrocytes, osteoblasts¹⁶, dentine (odontoblasts)⁸, and melanocytes¹⁷. Neural crest cells are

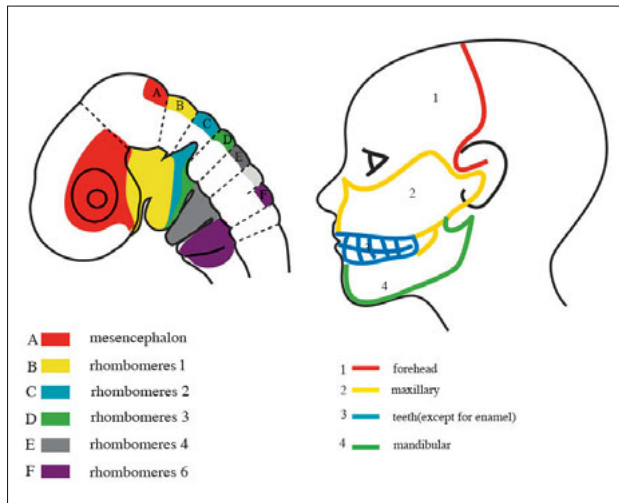
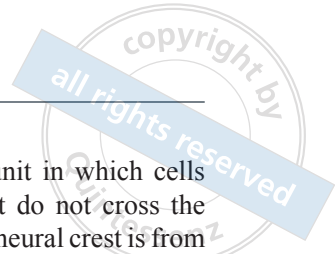


Fig 4 The migration of neural crest cells and the formation of face. The left picture shows the neural crest cells migrating from rhombomeres to pharyngeal arch, different colours show the different migratory routes. The right picture shows different colour regions refer to different neural crest cells.

defined because of their origin; they are multipotent and self-renewable¹⁸⁻²³. Based on these points, neural crest cells are considered stem cells or stem cell-like^{24,25}.

The development of neural crest-derived dental stem cells

The neural crest can be divided into four major regions: Cranial, vagal and sacral, trunk, and cardiac neural crest⁷. The development of the craniofacial region is closely related to the cranial neural crest. The primordia of three primary brain vesicles are visible while the neural plate is thickened, including the prosencephalon, mesencephalon, and rhombencephalon (hindbrain). The rhombencephalon is subdivided into eight rhom-

bomeres, each is a developmental unit in which cells in a rhombomere can exchange, but do not cross the boundaries. The region of the cranial neural crest is from the caudal forebrain to the level of rhombomere six of the myelencephalon⁹.

The neural crest cells originating from the midbrain and hindbrain regions form the cartilages in the pharyngeal arches²⁶. Human embryos include six pairs of pharyngeal arches; the first four are well-defined, the first arch forms on day 22, the second and third on day 24, the fourth and sixth on day 29; however, the fifth arch does not form in human embryos or forms transiently and regresses sequentially⁴.

The rhombencephalon neural crest cells migrate from rhombomeres (r) r1, r2, r4, r6, and r7, with little or no cranial neural crest cells apparent at the level of r3 or r5. Neural crest cells from the mesencephalon, r1, and r2 migrate into the first pharyngeal arch (mandibular arch), r4 into the second pharyngeal arch (hyoid arch), r6-r8 into pharyngeal arches 3-6, and pharyngeal arch 3 is mainly contributed by r6^{27,28}. On day 28, the first pharyngeal arch (mandibular arch) is divided into two parts, the maxillary and mandibular prominences. The migrated neural crest cells in the frontonasal area arise from the forebrain and midbrain, and neural crest cells in the maxillary and mandibular prominences are from the midbrain and hindbrain (Fig 4).

The basic morphology of the face is established between the fourth and 10th weeks by the development and joining of five prominences: The frontonasal prominence, a pair of maxillary prominences, and a pair of mandibular prominences. In the sixth week, the nasal placodes form the nasal pits and the nasal processes. In the seventh week, media nasal processes fuse to form the intermaxillary process, and intermaxillary process give rise to the philtrum and the primary palate. The

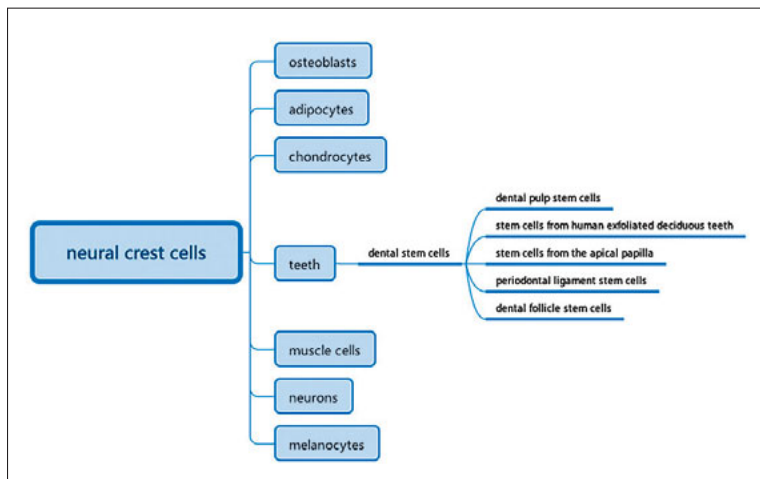


Fig 5 Types of stem cells derived from neural crest cells. The neural crest cells can differentiate into different kinds of cells and tissues, such as osteoblasts, adipocytes, chondrocytes, muscle cells, neurons, melanocytes and dental stem cells. Dental stem cells include DPSCs, DFSCs, SCAPs, SHEDs, and PDLSCs.

secondary palates are formed by the maxillary prominences in the eighth week; they form the majority of the palate and meet the primary palate at the incisive foramen. The maxillary and mandibular fuse with each other and in the eighth week, the prominence fusion is basically complete²⁹ (Fig 4).

The embryogenesis of teeth arises in the sixth week. Tooth morphogenesis involves a thickening stage, bud stage, cap stage, bell stage, and secretory stage³⁰. There are a large number of stem cells within teeth that originate from the embryonic neural crest. These stem cells are easy to obtain and have superb stemness; therefore, they have attracted increased research attention. It has been demonstrated that cranial neural crest cells can differentiate into dentine matrix, pulp, cementum, dental papilla, odontoblasts, periodontal ligaments, and so on⁸.

Different types of tooth derived stem cells

The neural crest cells can differentiate into different kind of cells and tissues, including dental stem cells (Fig 5). Dental stem cells, as described in Figure 6, include DPSCs, DFSCs, SCAPs, SHEDs, and PDLSCs. These dental stem cells are self-renewable and differentiate into other cells and tissues that originate from neural crest cells.

DPSCs

DPSCs were isolated from adult dental pulp in 2000¹. These cells in the dental pulp form new odontoblasts and reparative dentine while undergoing some physiological lesions in teeth. *In vitro*, dental pulp stem cells can self-renew and differentiate into multiple cells, such as osteoblasts, odontoblasts, and neurons. *In vivo*, these cells can form a vascularised pulp-like tissue surrounded by odontoblast-like cells.

PDLSCs

PDLSCs were isolated and separated from the surface of the root and were identified by Byoung-Moo Seo et al in 2004³. The periodontal ligament (PDL) is a connective tissue between the cementum and alveolar bone socket, which supports teeth and contributes to nutrition, homeostasis, and repair tissue. *In vitro*, PDLSCs express mesenchymal stem-cell markers in culture and can differentiate into cementoblast-like cells, osteoblasts, odontoblasts, and neuronal-like cells. *In vivo*, PDLSCs can generate cementum and PDL-like structures, suggesting that PDLSCs have a role in periodontal tissue regeneration.

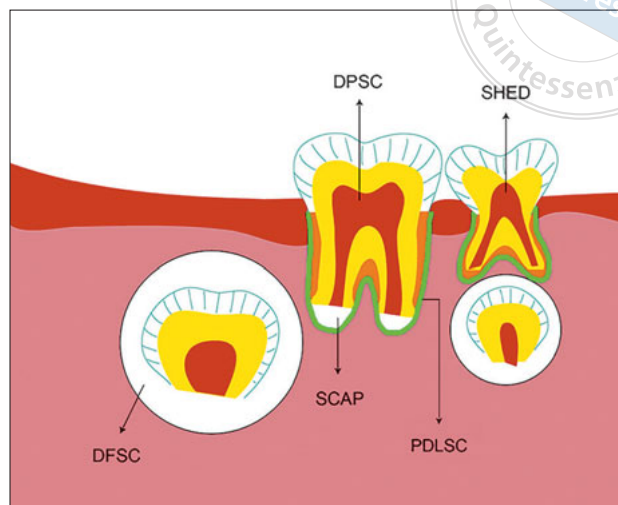


Fig 6 Different types of tooth-derived stem cells.

DFSCs

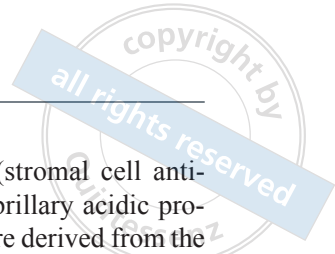
DFSCs were isolated from human dental follicles and identified by Morszeck et al in 2005⁴. The dental follicle is a connective tissue that surrounds the unerupted tooth. *In vitro*, DFSCs can differentiate into osteoblasts, adipocytes, and neuronal-like cells³¹⁻³³. *In vivo*, DFSCs can build fibrous or rigid connective tissues after 8 weeks of differentiation lining Hydroxyapatite (HAP) residues.

SHEDs

Miura et al discovered these cells in 2003². They used a technique very similar to DPSCs. SHEDs proliferate faster than DPSCs and can differentiate into osteoblasts and neuronal-like cells. SHEDs can form dentine-like structures *in vivo*, and could differentiate into neural tissue when injected into the dentate gyrus of the mouse hippocampus and expressed both neuronal and glial cell markers. These observations indicated that SHEDs could be used for dental pulp and neural regeneration.

SCAPs

Sonoyama et al identified SCAPs from the apical papilla of extracted third molars in 2006⁵. The apical papilla is involved in regulating root formation and later becomes the pulp. *In vitro*, SCAPs can differentiate into odontoblasts, chondrocytes and neuronal-like cells. *In vivo*, SCAPs can form dentine/pulp-like structures. SCAPs are cells from developing tissue; therefore, these cells may have a better potential for tissue regeneration than cells from mature tissues.



Potential therapeutic benefits of dental stem cells

Dentine/pulp engineering and regeneration

Dental pulp tissue is formed by odontoblasts, blood vessels, nerves, and connective tissue. Dental pulp regeneration is a process of biological tissue engineering to replace the damaged pulp tissue. The main challenges of dental pulp regeneration are revascularization and re-innervation, and the new dentine deposition by odontoblasts.

Although DPSCs, SHEDs, PDLSCs, SCAPs, and DFSCs can differentiate into odontoblasts within specific cultures *in vitro*, DPSCs, SHEDs, and SCAPs are frequently used for dentine-pulp regeneration because they are derived from pulp tissue or the precursor of pulp. DFSCs are isolated from dental follicles and contain precursor cells of the periodontal tissue, and PDLSCs are also a group of multi-potent stem cells that can differentiate into cementum/PDL-like tissue *in vivo*, so, DFSCs and PDLSCs are usually used in periodontal tissue regeneration to treat periodontal defects.

DPSCs can differentiate into multiple cell lineages, but they maintain their original properties as dental pulp cells because they are derived from dental pulp tissue. When Gronthos identified the DPSCs in 2000¹, they found that DPSCs could form a vascularised pulp-like tissue surrounded by odontoblast-like cells *in vivo*. In later research, DPSCs translated into animals could differentiate into odontoblasts and dentine/pulp-like tissues, sometimes with revascularization in some cultures. SHEDs are similar to DPSCs as they are both derived from dental pulp tissue. SHEDs can differentiate into multiple cells like DPSCs; however, SHEDs proliferate faster than DPSCs and fail to reconstitute a dentine/pulp-like complex, which might be explained by the fact that the developmental processes of deciduous teeth are different from permanent teeth³. SCAPs are isolated from the apical papilla, which is involved in regulating root formation and later becomes the pulp. SCAPs are capable of differentiating into the dentine/pulp-like complex, as the apical papilla is the precursor of pulp. SCAPs have a greater capacity for dentine regeneration than DPSCs⁵. Research into dentine/pulp regeneration is summarised in Table 1. Dentine/pulp regeneration research is still in the preclinical/animal experimental stage, and there have been few clinical trials.

Neural regeneration

DPSCs, SHEDs, PDLSCs, SCAPs, and DFSCs can differentiate into neuron-like cells and express important

neuronal markers, including Stro-1 (stromal cell antigen), nestin, c-FOS, GFAP (Glial fibrillary acidic protein), and β III-tubulin because they are derived from the neural crest⁴⁴⁻⁵¹. Research into neural regeneration is summarised in Table 2.

Those cells can differentiate into neuron-like cells; however, they do not mature into functional neuronal cells⁵⁰. Activation of the cAMP (cyclic Adenosine monophosphate) and PKC (protein kinase C) signaling pathways can promote DPSCs to differentiate into functional neurons and glia cells⁴⁷. Dental pulp regeneration comprises not only the regeneration of odontoblasts, but also the regeneration of the vital pulp of teeth. Dental pulp neural regeneration represents a protective response to temperature, chemical and mechanical stimulation to maintain the long-term survival of teeth. Although there has been little research into dental pulp neural regeneration, this approach will become a hot topic in pulp regeneration research in the future.

Central and peripheral nerve injuries are difficult to treat because the nervous system has a limited ability to repair damaged cells and tissues. But stem cells have regenerative effects on these defects. In this respect, dental stem cells have distinct advantages in that they can differentiate into neuron-like cells⁴⁵ and they are more easily obtained than iPS cells, bone marrow-derived mesenchymal stem cells and embryonic neuronal progenitors.

PDLSCs are associated mainly with periodontal tissue, rather than neural, regeneration; therefore, there has been little research about PDLSCs for therapeutic neural regeneration *in vivo*. DPSCs and SHEDs have been tested mainly for nerve regenerative therapies.

Revascularization

Functional tissue engineering and regeneration are challenging. Tissue regeneration requires a vascular network to provide oxygen and nutrients for transplanted cells^{34,58}.

Revascularization includes vasculogenesis and angiogenesis. Vasculogenesis refers to the mechanism of forming new blood vessels by the activation of vascular endothelial cell precursor cells; foetal vascular network formation occurs in this way⁵⁹. Angiogenesis refers to the process whereby existing vessels proliferate to form new blood vessels. The important cytokines for vascular formation and regeneration are angiogenin (Ang), vascular endothelial growth factor (VEGF), fibroblast growth factor (FGF), transforming growth factor- β (TGF- β), and platelet derived growth factor (PDGF). The applications of biomaterials cytokines and VEGF

Table 1 Dentine/pulp engineering and regeneration.

Cell	Cell source	Species	Host of Transplantation	Scaffold/Carrier	Result	Clinical Application	Ref.
DPSC	Third molars	Human	Immunocompromised beige mice	HA/TCP ceramic powder	Generate a dentine/pulp-like structure	Potential for dentinal repair	1
DPSC	First molar tooth buds	Rat	Adult rats	TGF-β1 soaked Millipore filter pieces	Tubular dentine formed; Differentiated into odontoblast	Inducing odontoblast differentiation and dentine formation	34
DPSC	Third molars	Human	SCID mouse	Human tooth slices (microtissue spheroids)	Pulp-like tissue and vessels regeneration	Regenerative endodontics	35
DPSC	Third molars	Human	Immunocompromised beige mice	HA/TCP ceramic powder	Generate dentine/pulp-like complex	Tissue regeneration	36
DPSC	Third molars	Human	Immunodeficient mice	Group4: Collagen scaffold impregnated with DPCs and DMP1	Group 4 demonstrated several signs of tissue regeneration	Dentine regeneration	37
DPSC	Third molars	Human	Immunocompromised beige mice	HA/TCP ceramic powder	Regenerate a dentine-pulp-like structure	Forming ectopic dentine and associated pulp tissue <i>in vivo</i>	38
DPSC	Neonatal murine tooth pulp	Murine	Immunocompromised Rag1 null mice	HAP / TCP	Produce dentine-like structure	Tissue regeneration	39
SHED	Deciduous incisors	Human	Immunocompromised mice	HA/TCP	Induce bone formation, generate dentine, express neural markers	Stem-cell therapies: autologous stem-cell transplantation and tissue engineering.	2
SHED	Deciduous teeth	Human	Immunodeficient mice	Tooth slice/scaffolds	Differentiate into functional odontoblasts	Dental pulp tissue engineering	40
SHED	Deciduous teeth	Human	Immunodeficient mice	Tooth slice/scaffolds (PLLA, poly-L-lactide acid,)	Generate predentine in the pulp-like tissues	Dental pulp engineering	41
SCAP	Third molars	Human	Immunocompromised mice	HA/TCP	Dentine tissue formed on the surface of the HA/TCP, along with connective tissue	Dentine regeneration, stem cell resource for tissue regeneration.	5
SCAP	Third molars	Human	Immunodeficient mice	A 3D and scaffold-free stem-cell sheet-derived pellet (CSDP)	Vascularised dental pulp-like tissue filled the root canal space	Dental pulp/dentine complex regeneration	42
SCAP	Third molars	Human	Immunodeficient mice	PLG(poly-D,L-lactide/glycolide) scaffolds	Pulp-like tissue regenerated	Pulp/dentine regeneration	43

HA/TCP: Hydroxyapatite/ Tricalcium Phosphate; MTA: mineral trioxide aggregate; TGF-β1: transforming growth factor-β1; SCID: severe combined immunodeficient; DMP1: dentine matrix protein 1.

Table 2 Neural regeneration.

Cell	Cell Source	Species	Host of Transplantation	Scaffold/Carrier	Result	Clinical Application	Ref.
DPSC	Third molars	Human	Chicken eggs	--	Express neuronal markers, acquire a neuronal morphology	Treat neurological disease (cell-therapeutic)	46
DPSC	Third molars	Human	Rat	--	Express neuron-specific markers, exhibit voltage dependent sodium and potassium channels	Cell therapy of degenerative disorders of the central nervous system	48
DPSC	Third molars	Human	SCI Rat	Chitosan scaffolds	Ameliorated locomotor recovery	Regenerative therapy	52
SHED	Deciduous incisors	Human	Mice	HA/TCP	Express neural cell markers	Treat neural tissue injury or degenerative diseases	2
SHED	Deciduous teeth	Human	rat	--	Neurodegeneration, nigrostriatal tract restoration.	Therapy for Parkinson's disease (PD)	53
SHED	Deciduous teeth	Human	ICR mice	--	Cognitive function improved	SHED-CM may provide a novel cell-free neuro-reparative therapy for Alzheimer's disease (AD).	54
SCAP	Third molars	Human	Rat	Fibrin hydrogels	Improve gait in spinally injured rats, reduce glial reactivity	Therapy for spinal cord injury	55
SCAP	A SCAP cell line called RP-89	Human	SCID mice	Matrigel	SCAP may be responsible for the chemical signal driving axons to target regenerated tissue	Neural regeneration	56
DFSCs	Third molars	Human	Sprague-Dawley rats	Electrospun PCL/PLGA material	Express oligodendrogenic lineage marker Olig2	Neural regeneration.	57

SCI: spinal cord injury; ICR: imprinting control region; SCID: severe combined immunodeficient; PCL: polycaprolactone; PLGA: poly D,L-lactic-glycolic acid.

Table 3 Revascularization.

Cell	Cell Source	Species	Host of Transplantation	Scaffold/Carrier	Result	Clinical application	Ref.
DPSC	Third molars	Human	SCID mice	Root slices 3D Microtissues	Enhanced vasculature	Securing blood supply	35
DPSC	Teeth from adults	Human	Immunosuppressed rats	Trimethylene carbonate and lactide polyglycolic acid	Vessels were found	Transplantation and surgical/clinical application in tissue repair.	60
DPSC	Porcine teeth	Porcine	SCID mice	Incisor roots	Produced higher blood flow and capillary density	Potential in ischemic disease therapy and pulp regeneration	61
DPSC	Third molars	Human	Chicken chorioallantoic membrane	Matrigel	Induce the formation of functional blood vessels	Tissue engineering	62
DPSC	Molar teeth	Mice	Mice	Modified Matrigel (MG) plug	Formed more mature tube-like structures, enhanced angiogenesis	Tissue regeneration.	63
DPSC SCAP DFSC	Third molars	Human	Chicken eggs	Matrigel	Predominant pro-angiogenic impact on endothelial migration and tube formation	Pulp regeneration and whole tooth engineering	64
SHED	Deciduous teeth; multiclonally-derived murine pulp stem cells	Human; Murine	SCID mice; Swiss mice	Human tooth slice	FGF-2 priming enhances the angiogenic potential of SHED	Improving angiogenesis in tissue constructs	65
DPSCs	Third molars	Human	SCID mice	Peptide hydrogel PuraMatrix root fragments	Angiogenesis	Regeneration of vascular tissues; Dental pulp regeneration.	66
Pulp-CD31+; CD146-SP Cell	Porcine tooth germ	Porcine	SCID mice	--	Vasculogenic	Potential clinical utility to ameliorate ischemic disease; Pulp regeneration	67
DPSC	Third molars	Human	Nude rats	--	Increase the number of vessels and reduce infarct size	Treatment of ischemic diseases.	68
SHED	Deciduous teeth	Human	Immunodeficient mice	Tooth slice/scaffolds	Differentiate into functional odontoblasts	Dental pulp tissue engineering.	40
SHED	Deciduous teeth	Human	SCID mice	Tooth slice/scaffolds	Reduction in human CD31-positive blood vessels	Treatment for necrotic immature permanent teeth	69



genes for the induction of vascular growth, and angiogenic precursor cells for revascularization during tissue engineering, have good potential.

For pulp tissue regeneration, the formation of dentine needs vital pulp, which requires the vasculature to provide nutrients. Vascularised odontoblasts that can produce dentine and are innervated should be involved in regenerated pulp tissue. However, it is difficult for teeth to become vascularized because the apical canal for blood vessel entrance is small. There has been some research into revascularization (Table 3). As a result, the smaller the apical opening, the more difficult it is to regenerate blood vessels, and immature teeth are more suitable for pulp tissue regeneration.

Perspective

In this review, we discuss the neural and vascular regeneration of dental pulp tissue. There are some prospects for cell-based therapy for regenerative medicine:

- Dental stem cells are easily obtained and retain their proliferation ability; therefore, they will become a popular stem cell resource for regenerative medicine;
- Vital and functional dental pulp regeneration should include revascularization and re-innervation of the pulp, and the deposition of new dentine by odontoblasts;
- Dental stem cells can be used to repair damaged cells and tissues after central and peripheral nerve injuries, which are difficult to treat because the nervous system has limited ability to repair itself;
- The revascularization ability of dental stem cells can be used in functional tissue engineering and regeneration because tissue regeneration requires a vascular network to provide oxygen and nutrients for transplanted cells.

To date there have been only cellular and preclinical studies of the dental stem cells – no clinical studies have been published. In conclusion, it is important to take into consideration that dental stem cells have potential for effective therapy.

Conflicts of interest

The authors reported no conflicts of interest related to this study.

Author contribution

Drs Yuan ZHU, Ping ZHANG and Ran Li GU participated in literature collection and analysis; Drs Yuan ZHU and Ping ZHANG prepared the manuscript; Dr Yun Song LIU designed the study and revised the manuscript; Prof Yong Sheng ZHOU revised the manuscript.

(Received Nov 30, 2017; accepted Dec 21, 2017)

References

1. Gronthos S, Mankani M, Brahimi J, Robey PG, Shi S. Postnatal human dental pulp stem cells (DPSCs) in vitro and in vivo. *Proc Natl Acad Sci USA* 2000;97:13625–13630.
2. Miura M, Gronthos S, Zhao M et al. SHED: stem cells from human exfoliated deciduous teeth. *Proc Natl Acad Sci USA* 2003;100:5807–5812.
3. Seo BM, Miura M, Gronthos S, et al. Investigation of multipotent postnatal stem cells from human periodontal ligament. *Lancet* 2004;364:149–155.
4. Morszeck C, Götz W, Schierholz J, et al. Isolation of precursor cells (PCs) from human dental follicle of wisdom teeth. *Matrix Biol* 2005;24:155–165.
5. Sonoyama W, Liu Y, Fang D, et al. Mesenchymal stem cell-mediated functional tooth regeneration in swine. *PLoS One* 2006;1:e79.
6. Hall BK. The neural crest as a fourth germ layer and vertebrates as quadripleuronic not triploblastic. *Evol Dev* 2000;2:3–5.
7. Hall BK. The neural crest and neural crest cells: discovery and significance for theories of embryonic organization. *J Biosci* 2008;33:781–793.
8. Hall BK. The Neural Crest in Development and Evolution. *Annual Review of Neuroscience* 1999;20:483–532.
9. Schoenwolf GC, Larsen WJ. *Larsen's Human Embryology*, 5th ed. London: Churchill Livingstone, 2014.
10. Mahendra S, Rao, Jacobson Marcus. *Developmental Neurobiology*, 4th ed. New York: Kluwer Academic/Plenum Publishers, 2005.
11. Lawson A, Anderson H, Schoenwolf GC. Cellular mechanisms of neural fold formation and morphogenesis in the chick embryo. *Anat Rec* 2001;262:153–168.
12. Billon N, Iannarelli P, Monteiro MC, et al. The generation of adipocytes by the neural crest. *Development* 2007;134:2283–2292.
13. Calloni GW, Glavieux-Pardanaud C, Le Douarin NM, Dupin E. Sonic Hedgehog promotes the development of multipotent neural crest progenitors endowed with both mesenchymal and neural potentials. *Proc Natl Acad Sci USA* 2007;104:19879–19884.
14. Frank E, Sanes JR. Lineage of neurons and glia in chick dorsal root ganglia: analysis in vivo with a recombinant retrovirus. *Development* 1991;111:895–908.
15. Barraud P, Seferiadis AA, Tyson LD, et al. Neural crest origin of olfactory ensheathing glia. *Proc Natl Acad Sci U S A* 2010;107:21040–21045.
16. McGonnell IM, Graham A. Trunk neural crest has skeletogenic potential. *Curr Biol* 2002;12:767–771.
17. Dupin E, Le Douarin NM. Development of melanocyte precursors from the vertebrate neural crest. *Oncogene* 2003;22:3016–3023.
18. Delfino-Machin M, Chipperfield TR, Rodrigues FS, Kelsh RN. The proliferating field of neural crest stem cells. *Dev Dyn* 2007;236:3242–3254.
19. Dupin E, Creuzet S, Douarin NML. *The Contribution of the Neural Crest to the Vertebrate Body*. New York: Springer US, 2006.

20. Le Douarin NM, Creuzet S, Couly G, Dupin E. Neural crest cell plasticity and its limits. *Development* 2004;131:4637–4650.
21. Le Douarin NM, Calloni GW, Dupin E. The stem cells of the neural crest. *Cell Cycle* 2008;7:1013–1019.
22. Kaltschmidt B, Kaltschmidt C, Widera D. Adult craniofacial stem cells: sources and relation to the neural crest. *Stem Cell Rev* 2012;8: 658–671.
23. Kruger GM, Mosher JT, Bixby S, Joseph N, Iwashita T, Morrison SJ. Neural crest stem cells persist in the adult gut but undergo changes in self-renewal, neuronal subtype potential, and factor responsiveness. *Neuron* 2002;35:657–669.
24. Trainor PA. Specification and patterning of neural crest cells during craniofacial development. *Brain Behav Evol* 2005;66:266–280.
25. Bae CJ, Saint-Jeannet JP. Chapter 2 – Induction and Specification of Neural Crest Cells: Extracellular Signals and Transcriptional Switches. Amsterdam, Netherlands: Elsevier Inc, 2014:27–49.
26. Adameyko I, Fried K. The Nervous System Orchestrates and Integrates Craniofacial Development: A Review. *Front Physiol* 2016;7:49.
27. La Noce M, Mele L, Tirino V, et al. Neural crest stem cell population in craniomaxillofacial development and tissue repair. *Eur Cell Mater* 2014;28:348–357.
28. Minoux M, Rijli FM. Molecular mechanisms of cranial neural crest cell migration and patterning in craniofacial development. *Development* 2010;137:2605–2621.
29. Helms JA, Cordero D, Tapadia MD. New insights into craniofacial morphogenesis. *Development* 2005;132:851–861.
30. Tucker A, Sharpe P. The cutting-edge of mammalian development; how the embryo makes teeth. *Nat Rev Genet* 2004;5:499–508.
31. Vollner F, Driemel O, Reichert T, Morszeck C. Isolation and characterization of dental follicle precursor cells (DFPCs). *J Stem Cells Regen Med* 2007;2:130. eCollection 2007.
32. Yao S, Pan F, Prpic V, Wise GE. Differentiation of stem cells in the dental follicle. *J Dent Res* 2008;87:767–771.
33. Völlner F, Ernst W, Driemel O, Morszeck C. A two-step strategy for neuronal differentiation in vitro of human dental follicle cells. *Differentiation* 2009;77:433–441.
34. Li Y, Lü X, Sun X, Bai S, Li S, Shi J. Odontoblast-like cell differentiation and dentin formation induced with TGF- β 1. *Arch Oral Biol* 2011;56:1221–1229.
35. Dissanayaka WL, Zhu L, Hargreaves KM, Jin L, Zhang C. Scaffold-free Prevascularized Microtissue Spheroids for Pulp Regeneration. *J Dent Res* 2014;93:1296–1303.
36. Batouli S, Miura M, Brahim J, et al. Comparison of stem-cell-mediated osteogenesis and dentinogenesis. *J Dent Res* 2003;82:976–981.
37. Prescott RS, Alsanea R, Fayad MI, et al. In vivo generation of dental pulp-like tissue by using dental pulp stem cells, a collagen scaffold, and dentin matrix protein 1 after subcutaneous transplantation in mice. *J Endod* 2008;34:421–426.
38. Gronthos S, Brahim J, Li W, et al. Stem cell properties of human dental pulp stem cells. *J Dent Res* 2002;81:531–535.
39. Janebodin K, Horst OV, Ieronimakis N, et al. Isolation and characterization of neural crest-derived stem cells from dental pulp of neonatal mice. *PLoS One* 2011;6:e27526.
40. Sakai VT, Zhang Z, Dong Z, et al. SHED differentiate into functional odontoblasts and endothelium. *J Dent Res* 2010;89:791–796.
41. Cordeiro MM, Dong Z, Kaneko T, et al. Dental pulp tissue engineering with stem cells from exfoliated deciduous teeth. *J Endod* 2008;34: 962–969.
42. Na S, Zhang H, Huang F, et al. Regeneration of dental pulp/dentine complex with a three-dimensional and scaffold-free stem-cell sheet-derived pellet. *J Tissue Eng Regen Med* 2016;10:261–270.
43. Huang GT, Yamaza T, Shea LD, et al. Stem/progenitor cell-mediated de novo regeneration of dental pulp with newly deposited continuous layer of dentin in an in vivo model. *Tissue Eng Part A* 2010;16: 605–615.
44. Nosrat IV, Smith CA, Mullally P, Olson L, Nosrat CA. Dental pulp cells provide neurotrophic support for dopaminergic neurons and differentiate into neurons in vitro; implications for tissue engineering and repair in the nervous system. *Eur J Neurosci* 2004;19:2388–2398.
45. Le Douarin NM. The avian embryo as a model to study the development of the neural crest: a long and still ongoing story. *Mech Dev* 2004;121:1089–1102.
46. Arthur A, Rychkov G, Shi S, Koblar SA, Gronthos S. Adult human dental pulp stem cells differentiate toward functionally active neurons under appropriate environmental cues. *Stem Cells* 2008;26: 1787–1795.
47. Király M, Porcsalmy B, Pataki A, et al. Simultaneous PKC and cAMP activation induces differentiation of human dental pulp stem cells into functionally active neurons. *Neurochem Int* 2009;55:323–332.
48. Király M, Kádár K, Horváthy DB, et al. Integration of neuronally pre-differentiated human dental pulp stem cells into rat brain in vivo. *Neurochem Int. Neurochem Int* 2011;59:371–381.
49. Karaöz E, Demircan PC, Sağlam O, Aksoy A, Kaymaz F, Duruksu G. Human dental pulp stem cells demonstrate better neural and epithelial stem cell properties than bone marrow-derived mesenchymal stem cells. *Histochem Cell Biol* 2011;136:455–473.
50. Aanismaa R, Hautala J, Vuorinen A, Miettinen S, Narkilahti S. Human dental pulp stem cells differentiate into neural precursors but not into mature functional neurons. *Stem Cell Discovery* 2015;2: 85–91.
51. Song M, Jue SS, Cho YA, Kim EC. Comparison of the effects of human dental pulp stem cells and human bone marrow-derived mesenchymal stem cells on ischemic human astrocytes in vitro. *J Neurosci Res* 2015;93:973–983.
52. Zhang J, Lu X, Feng G, et al. Chitosan scaffolds induce human dental pulp stem cells to neural differentiation: potential roles for spinal cord injury therapy. *Cell Tissue Res* 2016;366:129–142.
53. Fujii H, Matsubara K, Sakai K, et al. Dopaminergic differentiation of stem cells from human deciduous teeth and their therapeutic benefits for Parkinsonian rats. *Brain Res* 2015;1613:59–72.
54. Mita T, Furukawa-Hibi Y, Takeuchi H, et al. Conditioned medium from the stem cells of human dental pulp improves cognitive function in a mouse model of Alzheimer's disease. *Behav Brain Res* 2015;293: 189–197.
55. De Berdt P, Vanacker J, Ucakar B, et al. Dental Apical Papilla as Therapy for Spinal Cord Injury. *J Dent Res* 2015;94:1575–1581.
56. de Almeida JF, Chen P, Henry MA, Diogenes A. Stem cells of the apical papilla regulate trigeminal neurite outgrowth and targeting through a BDNF-dependent mechanism. *Tissue Eng Part A* 2014;20: 3089–3100.
57. Li X, Yang C, Li L, et al. A therapeutic strategy for spinal cord defect: human dental follicle cells combined with aligned PCL/PLGA electrospun material. *Biomed Res Int* 2015;2015:197183.
58. Casagrande L, Cordeiro MM, Nör SA, Nör JE. Dental pulp stem cells in regenerative dentistry. *Odontology* 2011;99:1–7.
59. Drake CJ, Hungerford JE, Little CD. Morphogenesis of the first blood vessels. *Ann N Y Acad Sci* 1998;857:155–179.
60. d'Aquino R, Graziano A, Sampaolesi M, et al. Human postnatal dental pulp cells co-differentiate into osteoblasts and endotheliocytes: a pivotal synergy leading to adult bone tissue formation. *Cell Death Differ* 2007;14:1162–1171.
61. Ishizaka R, Hayashi Y, Iohara K, et al. Stimulation of angiogenesis, neurogenesis and regeneration by side population cells from dental pulp. *Biomaterials* 2013;34:1888–1897.
62. Bronckaers A, Hilkens P, Fanton Y, et al. Angiogenic properties of human dental pulp stem cells. *PLoS One* 2013;8:e71104.
63. Janebodin K, Zeng Y, Buranaphatthana W, Ieronimakis N, Reyes M. VEGFR2-dependent angiogenic capacity of pericyte-like dental pulp stem cells. *J Dent Res* 2013;92:524–531.

64. Hilkens P, Fanton Y, Martens W, et al. Pro-angiogenic impact of dental stem cells in vitro and in vivo. *Stem Cell Res* 2014;12:778–790.
65. Gorin C, Rochefort GY, Bascetin R, et al. Priming Dental Pulp Stem Cells With Fibroblast Growth Factor-2 Increases Angiogenesis of Implanted Tissue-Engineered Constructs Through Hepatocyte Growth Factor and Vascular Endothelial Growth Factor Secretion. *Stem Cells Transl Med* 2016;5:392–404.
66. Dissanayaka WL, Hargreaves KM, Jin L, Samaranayake LP, Zhang C. The interplay of dental pulp stem cells and endothelial cells in an injectable peptide hydrogel on angiogenesis and pulp regeneration in vivo. *Tissue Eng Part A* 2015;21:550–563.
67. Iohara K, Zheng L, Wake H, et al. A novel stem cell source for vasculogenesis in ischemia: subfraction of side population cells from dental pulp. *Stem Cells* 2008;26:2408–2418.
68. Gandia C, Armiñan A, García-Verdugo JM, et al. Human dental pulp stem cells improve left ventricular function, induce angiogenesis, and reduce infarct size in rats with acute myocardial infarction. *Stem Cells* 2008;26:638–645.
69. Bento LW, Zhang Z, Imai A, et al. Endothelial differentiation of SHED requires MEK1/ERK signaling. *J Dent Res* 2013;92:51–57.

