



# DIGITAL SLR SHADE DETERMINATION AND CROSS POLARISATION

USAGE IN EVERYDAY DENTISTRY

Mentor Smilaj\*

\* DDS, Private practice ,Prizren ,Kosova

## Equipments for realizing and editing the macro dental photography and cross polarised photo

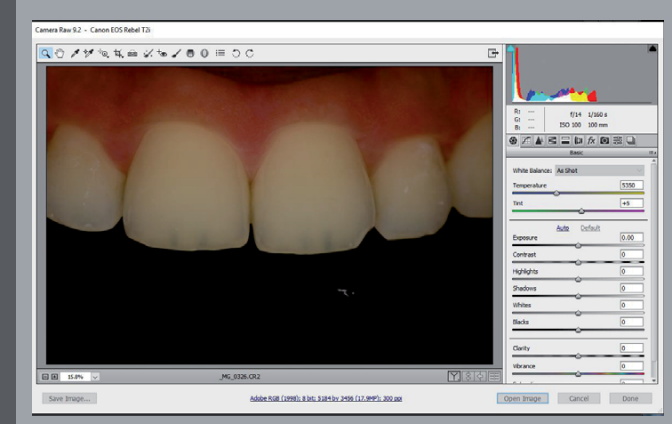
Camera body and macro lens 100 mm



Ring flash with cross polarization filter and twin flash



Photoshop and RAW captured files on DSLR

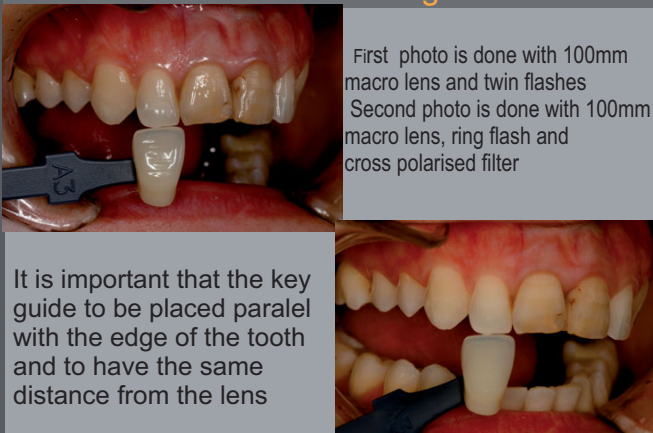


## The usage of dental macro photography in shade determination and communication with laboratory in prosthetic restoration

Before prostetic restoration



Shade taking

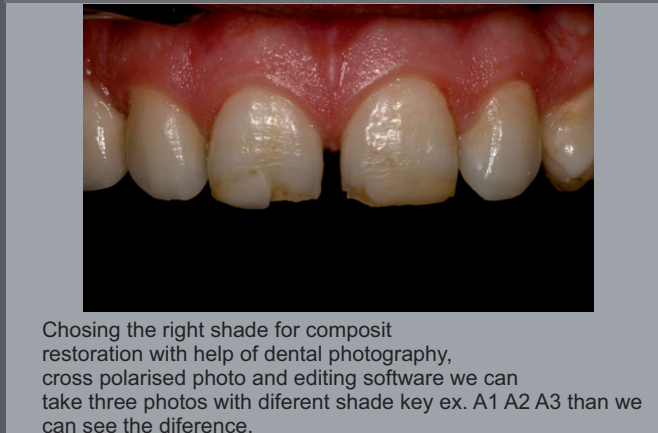


Final restoration

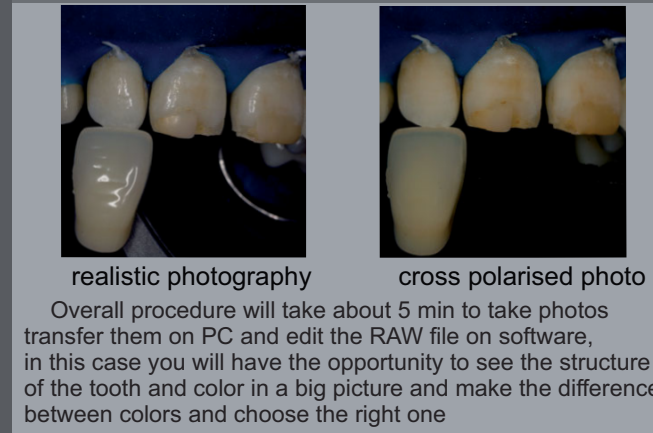


## The usage of dental macro photography in shade determination, in chearside for direct composite restoration

Direct diastema closure and restoring incisal edge



Shade taking



final result of restoration



## The usage of dental macro photography in determination of tooth structure and choosing the right shade with composite buttons

Cross polarized photo

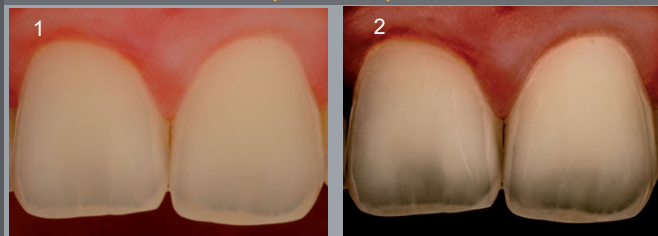
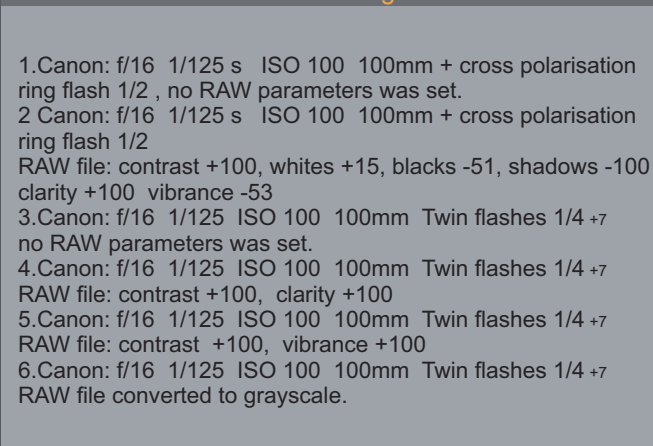
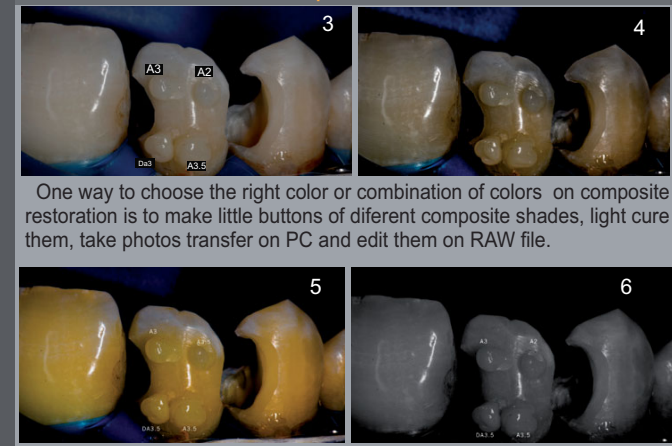


Photo settings



Composite buttons



**Conclusion :** The usage of dental macro photography in combination with cross polarized filter and proper editing of Raw file allows us to see better the tooth structure and enables us a better communication with the laboratory, also it enables us to choose the natural forms ,same color and give us opportunities to make a hidden direct or indirect restorations.