

Int Poster J Dent Oral Med 2011, Vol 13 No 3, Poster 554

## ULTRASONOGRAPHY

### ITS REVIVAL IN DENTISTRY

**Language:** English

**Authors:**

Aniruddh Yashwant Vishnuprashad, Arti Agrawal, Prof. Jonathan Daniel Mariappan,  
Mahatma Gandhi Post Graduate Institute of Dental Sciences, Department of Oral Medicine and Radiology, Pondicherry, India

**Date/Event/Venue:**

5.12.2010  
National BDS students seminar on Oral Medicine and Radiology  
Chennai, Tamil Nadu, India

Poster Award

Award for the best poster

A process that uses the reflection of high-frequency (3 to 10 MHz) sound waves to make an image of structures deep within the body.



Fig. 1: Ultrasonogram

### Tuberculous abscess

Ultrasound demonstrating intraglandular tuberculous abscess. There is a complex mass (callipers) in the submandibular gland with a central necrotic abscess cavity.



Fig. 2: Tuberculous abscess

### Salivary gland pathology

The arrowheads indicate the mass lesion with an echogenic signal and a clear margin in the left submandibular gland, diagnosed as benign submandibular related tumor.

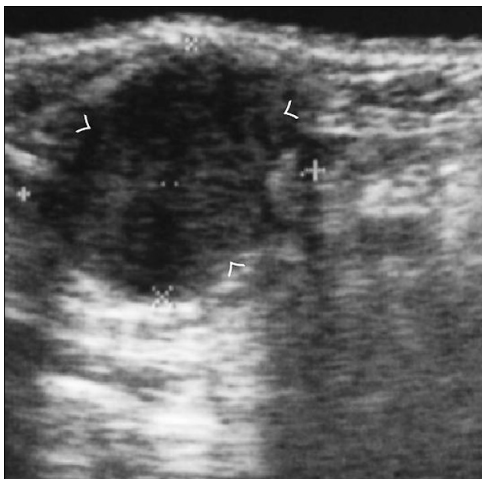


Fig. 3: Salivary gland pathology

### Evaluation of distraction osteogenesis

Early and late complications of soft tissue healing, movements of the bone segment, as well as the osteogenesis are easily detectable using B-scan ultrasonography.



Fig. 4: Evaluation of distraction osteogenesis

### Periodontal pocket depth estimation

Ultrasonography probe provides a mapping system for noninvasively making and recording differential measurements of depth of any patient's periodontal ligaments relative to a fixed point as CEJ.

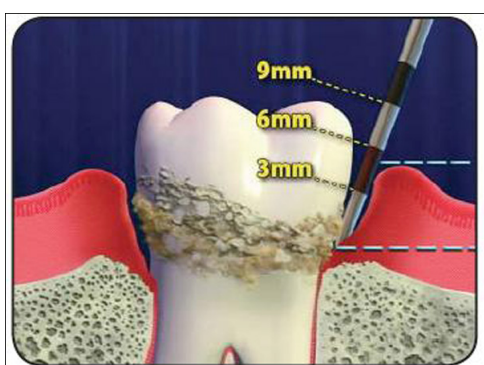


Fig. 5: Periodontal pocket depth estimation

### Enamel crack

Enamel cracks can be accurately identified by ultrasound dental crack detection system using novel transducer, coupling agent & customized electronic & digital signal processing.

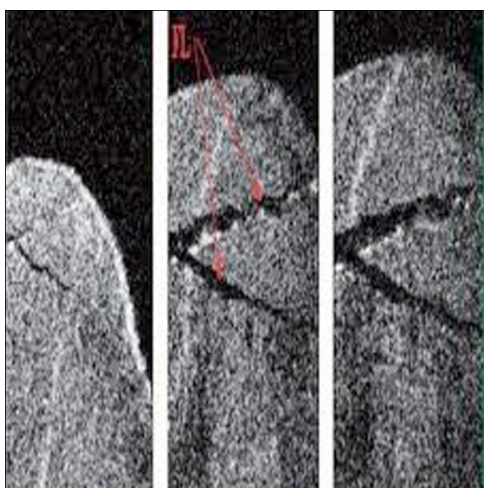


Fig. 6: Enamel crack

### Cellulitis

- In cellulitis, well defined hypoechoic septa between fat and connective tissue [characteristic cobblestone appearance]
- In abscess, anechoic to hyperechoic due to sediment, septa or gas.

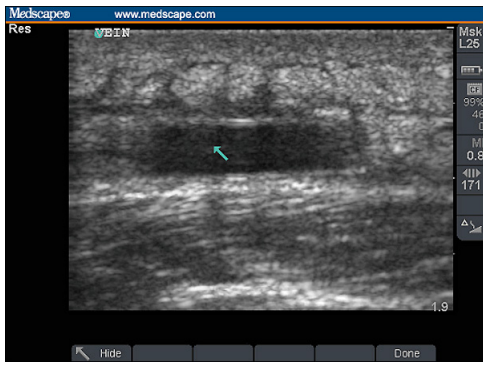


Fig. 7: Cellulitis

### Head & neck cancer

Sharp borders, Hyperechogenicity, & peripheral vascularity indicate signs of metastatic lymph nodes.

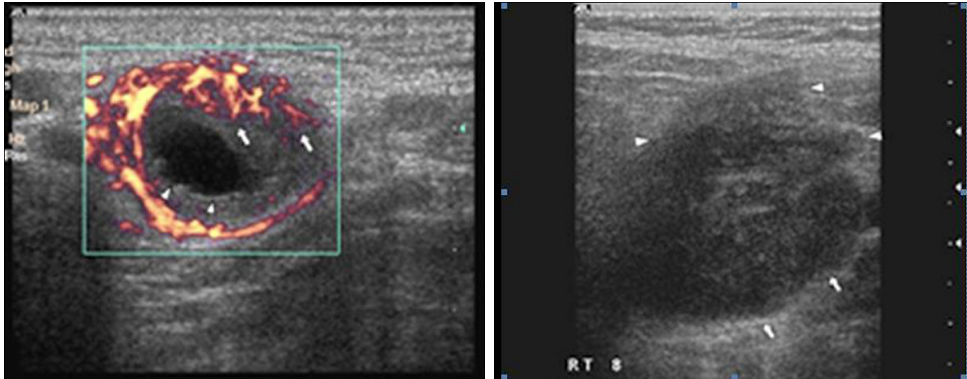


Fig. 8-9: Head and neck cancer

### Large TMJ effusion

Head of the condyle and the articular eminence, is generally hypoechoic, the margin of the bone is hyperechoic. The joint capsule, retrodiscal tissue, lateral pterygoid and masseter muscles, are isoechoic and appear grey.

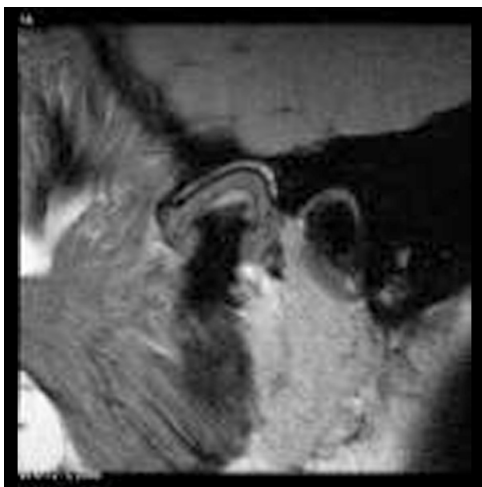


Fig. 10: TMJ effusion

*This Poster was submitted by Aniruddh Yashwant Vishnuprashad.*

### Correspondence address:

Aniruddh Yashwant Vishnuprashad  
 Mahatma Gandhi Post Graduate Institute of Dental Sciences  
 Puducherry(U.T)  
 India

# ULTRASONOGRAPHY - "ITS REVIVAL IN DENTISTRY"

A process that uses the reflection of high-frequency (3 to 10MHz) sound waves to make an image of structures deep within the body.

## TUBERCULOUS ABSCESS

Ultrasound demonstrating intraglandular tuberculous abscess. There is a complex mass (callipers) in the submandibular gland with a central necrotic abscess cavity.



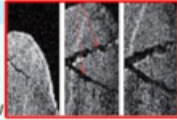
## EVALUATION OF DISTRACTION OSTEOGENESIS

Early and late complications of soft tissue healing, movements of the bone segment, as well as the osteogenesis are easily detectable using B-scan ultrasonography.



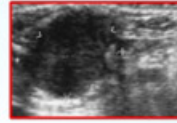
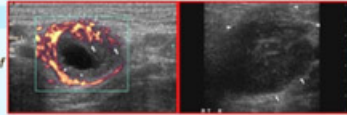
## ENAMEL CRACK

Enamel cracks can be accurately identified by ultrasound dental crack detection system using novel transducer, coupling agent & customized electronic & digital signal processing.



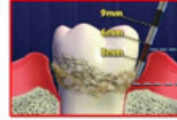
## HEAD & NECK CANCER

Sharp Borders, Hyperechogenicity, & Peripheral Vascularity indicate signs of metastatic lymph nodes.



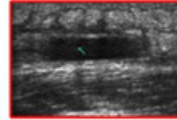
## SALIVARY GLAND PATHOLOGY

The arrowheads indicate the mass lesion with an echogenic signal and a clear margin in the left submandibular gland, diagnosed as benign submandibular related tumor.



## PERIODONTAL POCKET DEPTH ESTIMATION

Ultrasonography probe provides a mapping system for noninvasively making and recording differential measurements of depth of any patient's periodontal ligaments relative to a fixed point as CEJ.

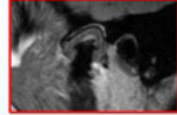


## CELLULITIS

- In cellulitis, well defined hypoechoic septa between fat and connective tissue [characteristic cobblestone appearance]  
- In abscess, anechoic to hyperechoic due to sediment, septa or gas.

## LARGE TMJ EFFUSION

Head of the condyle and the articular eminence, is generally hypoechoic, the margin of the bone is hyperechoic.  
The joint capsule, retrodiscal tissue, lateral pterygoid and masseter muscles, are isoechoic and appear grey.



**AUTHORS:** V.ANIRUDDH YASHWANT,  
ARTI AGRAWAL,  
C.R.R.I.  
MGPGI, Puducherry.



**GUIDE:** Dr.M.JONATHAN DANIEL,  
PROFESSOR & HEAD,  
DEPT. OF ORAL MEDICINE & RADIOLOGY  
MGPGI, Puducherry.