

Int Poster J Dent Oral Med 2010, Vol 12 No 2, Poster 494

Esthetic appearance of the artificial tooth located upon the attachment

Language: English

Authors:

Dr. Oana-Cella Andrei, Dr. Titus Farcasiu,
University of Medicine and Pharmacy "Carol Davila", Removable Prosthetic Department, Bucharest, Romania

Date/Event/Venue:

November 20th-21st, 2009
AIOP International Congress
Bologna, Italy

Introduction

The functional problem of the reduced dimensions of the first artificial tooth by fault of the restricted vertical space was solved using various prosthetic solutions chosen to offer the best esthetic results possible under the circumstances.

Objectives

A lot of clinical cases are frequently solved giving priority to esthetics despite of the function, with good results but only on a short term. But what the majority of the patients want is a long-term successful prosthetic treatment, from both esthetic and functional criteria. The aim of this study was to explore the different methods and materials that can be used in order to fulfill their expectations.



Fig. 1: case 3 photo 1

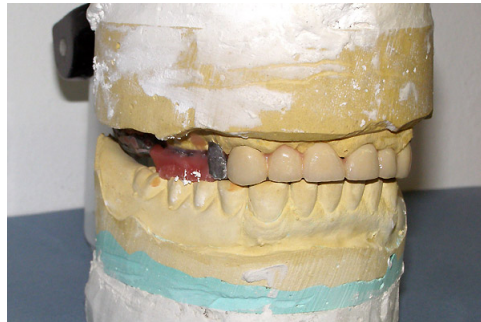


Fig. 2: case 3 photo 2

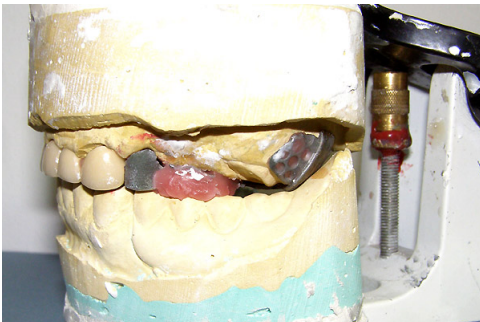


Fig. 3: case 3 photo 3



Fig. 4: case 3 photo 4



Fig. 5: case 3 photo 5



Fig. 6: case 3 photo 6



Fig. 7: case 3 photo 7



Fig. 8: case 3 photo 8



Fig. 9: case 3 photo 9



Fig. 10: case 3 photo 10



Fig. 11: case 4 photo 1



Fig. 12: case 4 photo 2



Fig. 13: case 3 photo 3

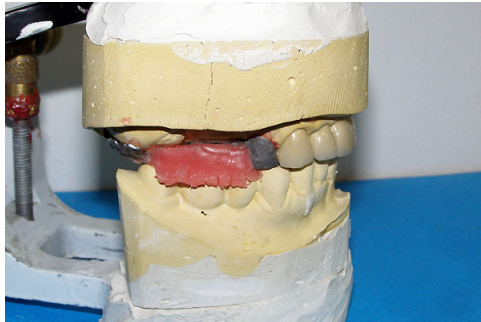


Fig. 14



Fig. 15

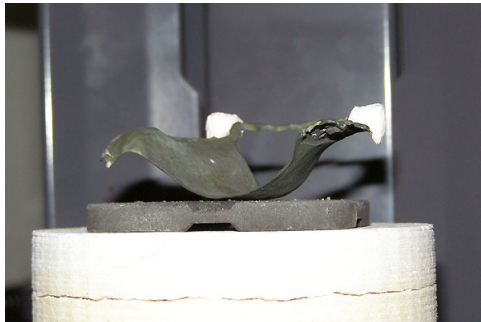


Fig. 16



Fig. 17



Fig. 18



Fig. 19



Fig. 20

Material and Methods

The authors selected for these study 20 partially edentulous patients aged between 45 and 60 years old who presented different situations of the available vertical space. All the dentures were constructed using the same type of attachments and the cases were followed for a period of at least 4 years. The dentures were functionally designed, but with a special care for obtaining maximum esthetic appearance possible in each case.

Results

The functionality of the dentures remained unchanged throughout the period. The esthetic appearance changed in time only when the artificial tooth was made from composite resin and the patient was a smoker or/and had a poor hygiene. The artificial tooth made from acrylic resin or porcelain did not suffer any changes in color or shape.

Conclusions

The esthetic appearance of the artificial tooth located upon the attachment can be successfully obtained using different materials and techniques that modify the aspect of the tooth keeping its dimensions in functional limits.

Literature

1. Andrei O.C., Restaurări protetice cu caracter fizionomic în edentațiile parțiale întinse, Editura Cartea Universitară, București, 2005, ISBN 973-731-214 -7.
2. Andrei O.C., Proteza cu capse în edentația terminală, Editura Cermaprint, București, 2007, ISBN 978 -973 -7667 -88 -5.
3. Barclay C.W., Walmsley A.D. - Fixed And Removable Prosthodontics, Churchill Livingstone, Edinburgh, London, 1998.

This Poster was submitted by Dr. Oana-Cella Andrei.

Correspondence address:

Dr. Oana-Cella Andrei
University of Medicine and Pharmacy "Carol Davila"
Str. Branduselor nr.7 sector 3
Bucharest, Romania



Esthetic appearance of the artificial tooth located upon the attachment



ANDREI OANA-CELLA, Farcașiu Titus
Removable Prosthodontic Department, Faculty of Dental Medicine,
Carol Davila University, Bucharest, Romania

Introduction

The functional problem of reduced dimensions of the first artificial tooth due to restricted vertical space was solved using various prosthetic solutions chosen to offer the best esthetic results possible under the circumstances.



Objectives

A lot of clinical cases are solved giving priority to esthetics despite function, with good results but only for short term. What the majority of patients want is a long term successful prosthetic treatment, from both esthetic and functional criteria. The aim of this study is to explore different methods and materials that can be used in order to fulfill their expectations.

Material and methods

The authors selected for this study 20 partially edentulous patients aged between 45 and 60 years old who presented different situations of available vertical space. All the dentures were constructed using the same type of attachments and the cases were followed for at least 4 years. The dentures were functionally designed, but with a special care for obtaining maximum esthetic appearance possible in each case.



Results

The functionality of the dentures remained unchanged in time. The esthetic appearance changed in time only when the artificial tooth was made from composite resin and the patient was a smoker or/and had a poor oral hygiene. The artificial tooth made from acrylic resin or ceramics did not suffer any change in color or shape.

Conclusions

The esthetics of the artificial tooth located upon the attachment can be successfully obtained using different materials and techniques which can modify the aspect of the tooth keeping its dimensions in functional limits.