

PRELIMINARY RESULTS OF CAMLOG IMPLANTS IN THE AESTHETIC ZONE: CLINICAL AND RADIOLOGICAL EVALUATION

KAHRAMANOĞLU E^a, VANLIOĞLU B^b, ÖZKAN Y^c, KULAK-ÖZKAN Y^d

^a Research Assistant, Department of Prosthodontics, Faculty of Dentistry, University of Marmara, Istanbul, Turkey

^b Associate Professor, Department of Prosthodontics, Faculty of Dentistry, University of Marmara, Istanbul, Turkey

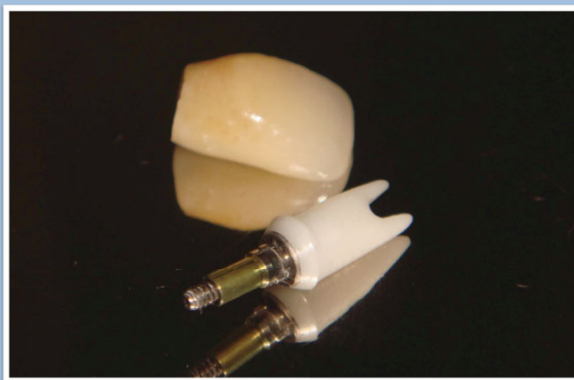
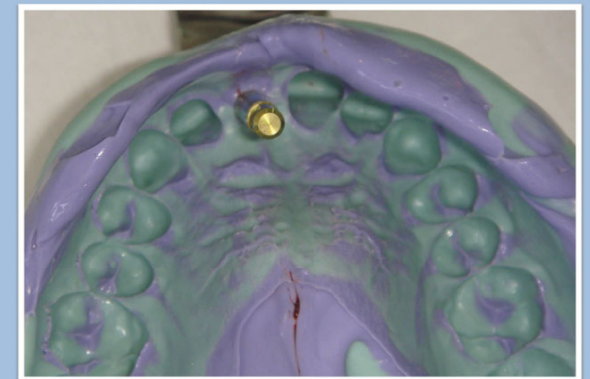
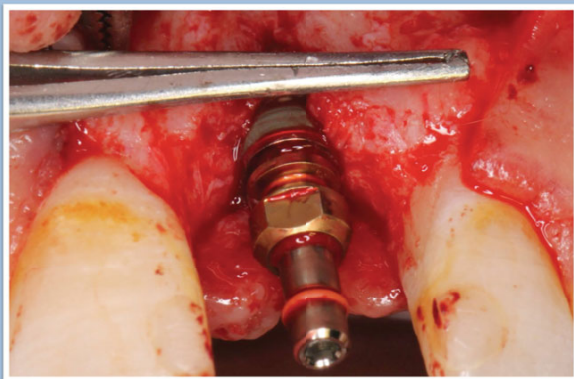
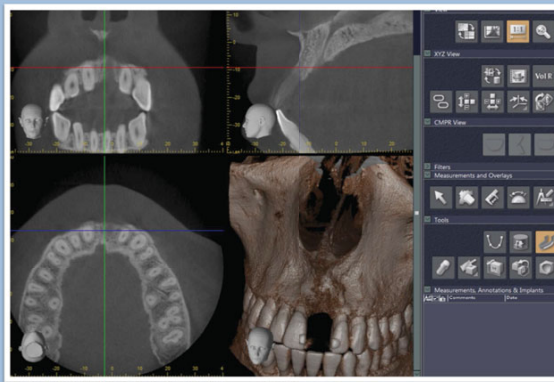
^c Professor, Department of Oral Surgery, Faculty of Dentistry, University of Marmara, Istanbul, Turkey

^d Professor and Head of Department, Prosthodontics, Faculty of Dentistry, University of Marmara, Istanbul, Turkey

Objectives: The aim of this study was to prospectively assess clinical and radiological results in a group of patients treated with Camlog implants supporting mostly single-tooth, and partial restorations.

Material and Methods: In this study, patients were treated with implant (Camlog Biotechnologies, Basel, Switzerland) supported all ceramic single crowns and followed for 1 year. The implants were evaluated by clinical and radiographic parameters. Clinical parameters like plaque index (PI), sulcus bleeding index (BI), peri-implant probing depth (PD), and marginal bone loss (MBL) were recorded. Repeated-measurement ANOVA, Kruskal-Wallis test, Wilcoxon signed rank test and paired samples test were used for statistical analysis.

Results: Twenty-four implants were placed in 20 patients. At the recall examinations, all implants were successfully integrated, demonstrating healthy peri-implant soft tissues as documented by standard clinical parameters. The mean MBL at baseline was 0,98 mm ± 0,51 at mesial side; 0,88 mm ± 0,40 at distal side. The MBL reached to 1,24 mm ± 0,58 at mesial; 1,11 mm ± 0,46 at distal side at 1 year. The difference was statistically insignificant. Soft tissues were clinically healthy. The mean PD at baseline was 2,95 mm ± 0,59 and increased to 3,19 mm ± 0,77 at 1 year but the difference was statistically insignificant (Table 1-2).



Baseline

1.year

Table 1: The mean marginal bone loss value

Time	Mean	Sd
Baseline Mesial	0,98	0,51
Baseline Distal	0,88	0,40
6 months mesial	1,14	0,58
6 months distal	1,01	0,42
1 year mesial	1,22	0,67
1 year distal	1,10	0,54

Table 2: The mean probing depth value

Time	Mean	Sd
Baseline	2,91	0,58
6 months	3,08	0,72
1 year	3,00	0,63

Conclusion: Camlog implants in the anterior zone reveal successful clinical and radiographic outcomes when ideal treatment steps are performed.

Address: Ms. Prof. Dr. Yasemin Kulak Özkan
Head of Department, Department of Prosthodontics
Marmara University Faculty of Dentistry, İstanbul, Turkey,
+902122319120
ykozkan@marmara.edu.tr