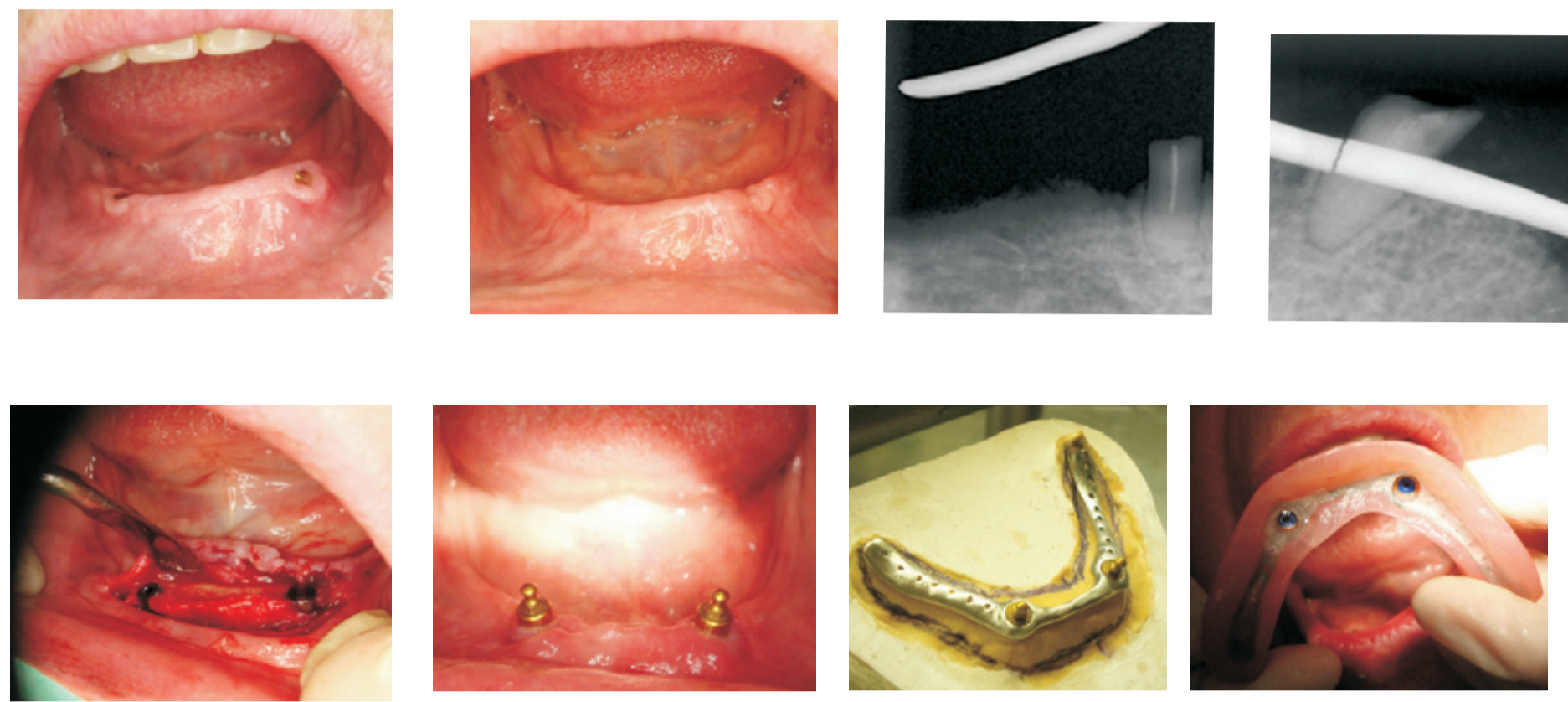


TEETH HEIGHT PRESERVATION BY MEANS OF REVERSE TOOTH RETENTION METHOD



Mykhaylo Kasiyanchuk
UKRAINE

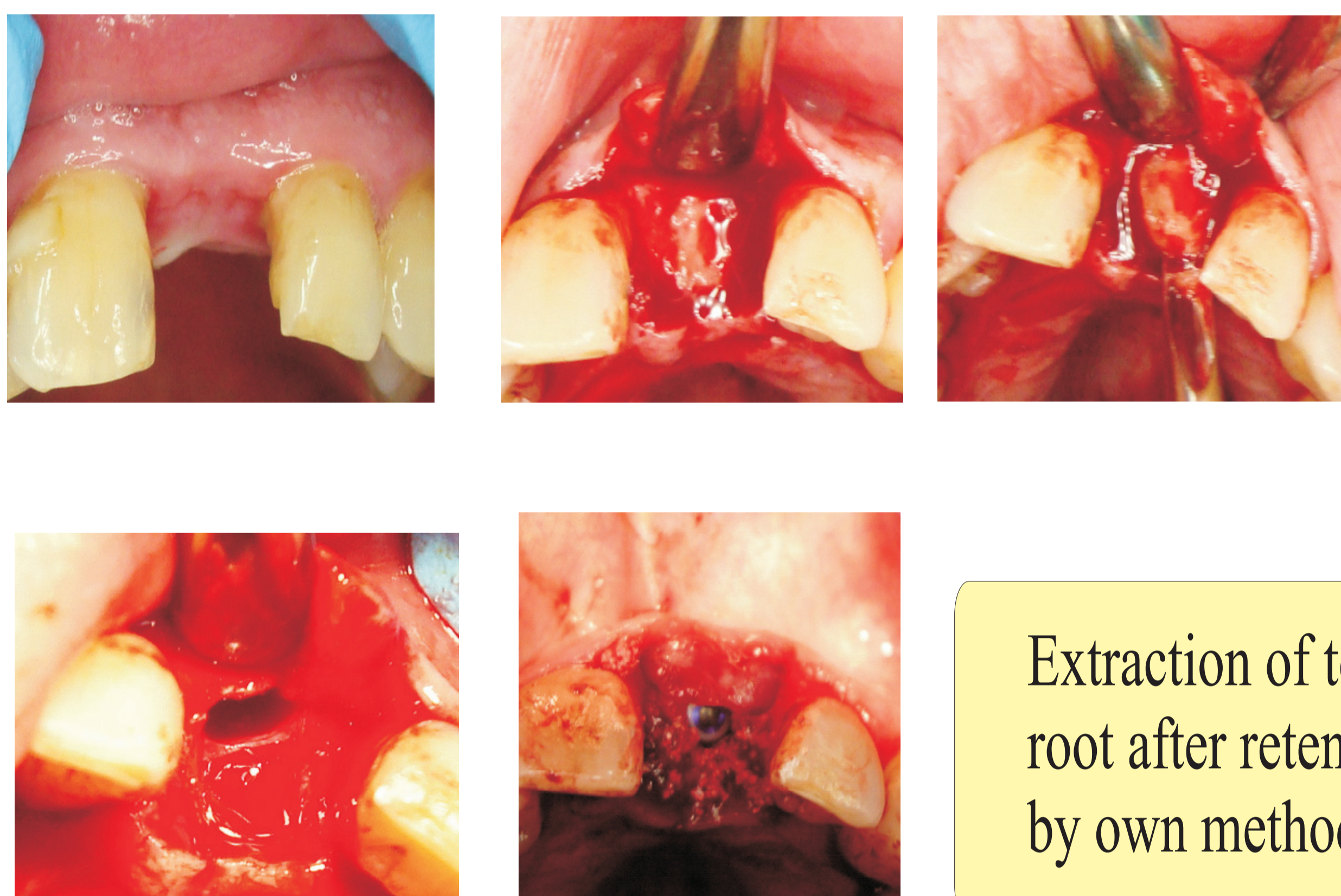
PhD, MD, BDIZ EDI,
Private dental practice
Medical University,
Chernivtsi, Ukraine



Gerontologic use of teeth retention repair

Tooth loss is often associated with atrophy of the alveolar ridges and insufficient bone for dental implants placement. The preservation of alveolar ridge dimensions and bone characteristics could be more effective than any augmentation methods. Attempts to reduce alveolar bone resorption include the placement of natural roots, root analogues and immediate implantations into the extraction socket.

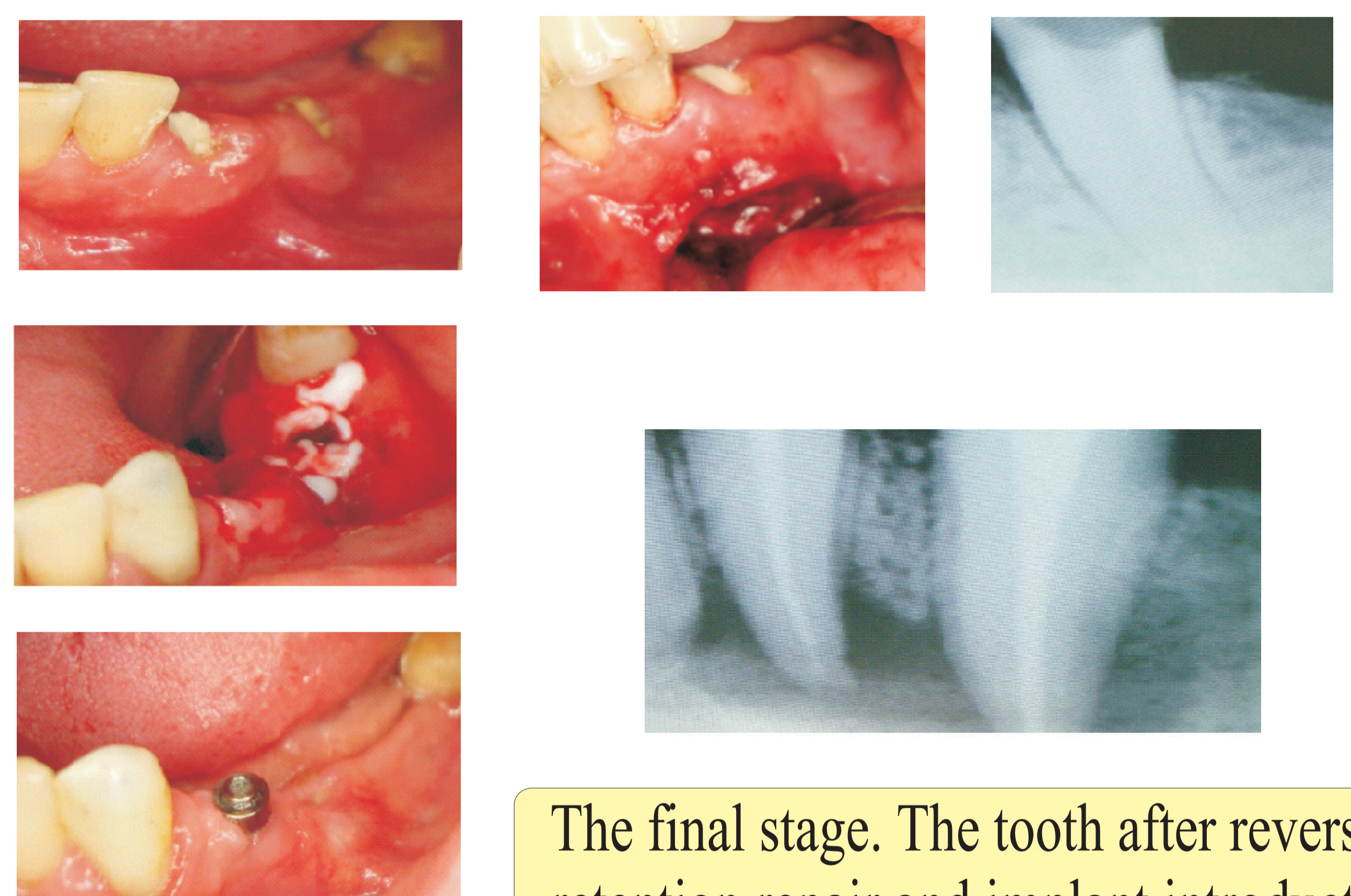
The aim of this study was to evaluate the effectiveness of reverse tooth retention methods in alveolar bone volume preservation.



Extraction of tooth root after retention by own method

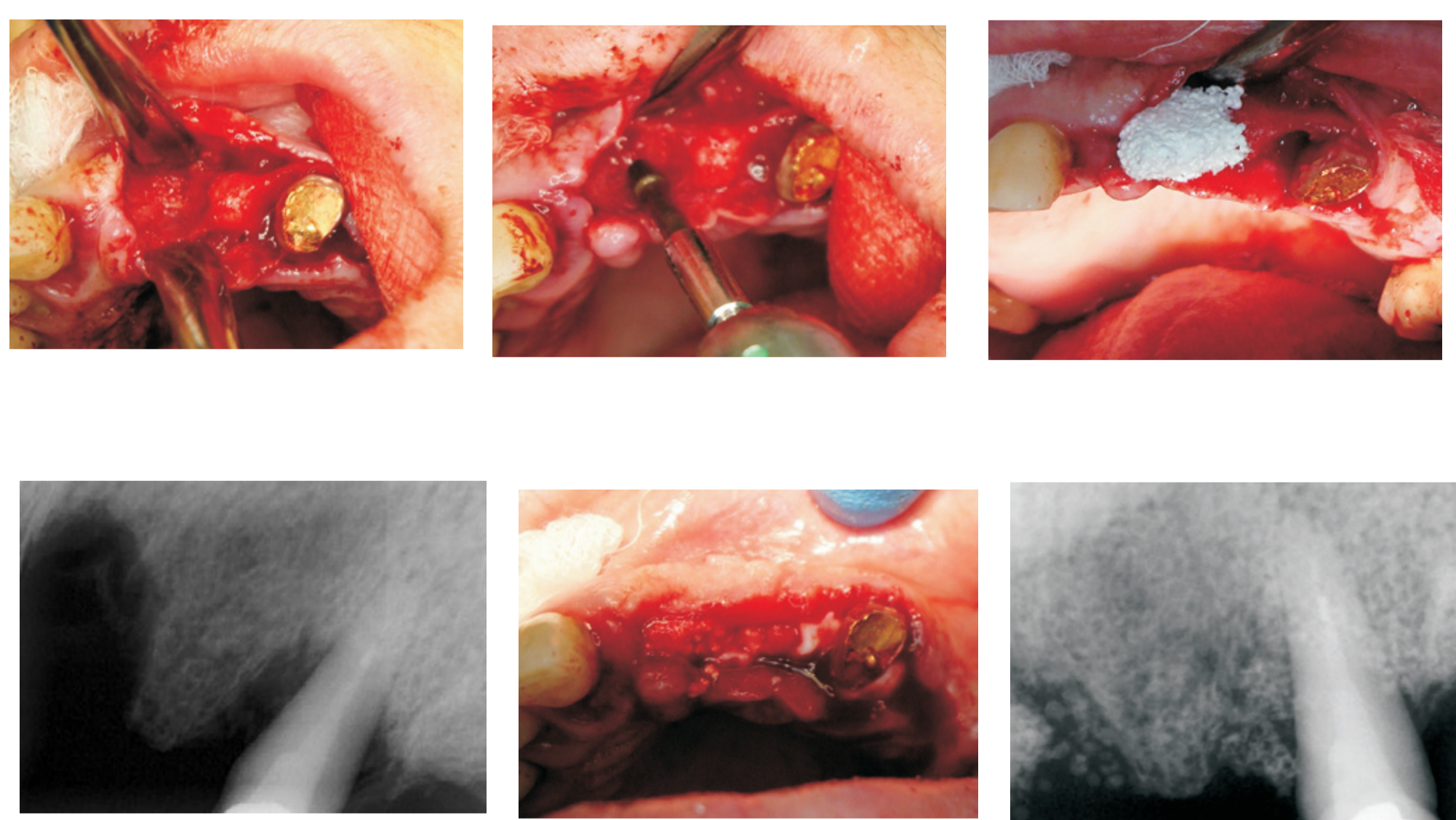
Materials and methods: The study included 65 consecutive patients presenting beaked teeth or their roots after trauma or periodontal disease with atrophy beginning. The own method of reverse teeth retention was performed in all cases. The treated roots were covered with gum flap sometimes in combination with membrane. The place was treated with red rays laser. The height of the alveolar bone ridges was calculated in each patient after X-ray or CT evaluation.

Results. Follow up observation of patients show a mean marginal bone loss of 1,2 mm during the period of observation. The vertical resorption in frontal area was $1,4 \pm 0,5$ mm, in molar area the horizontal resorption was absent during 3 years, during 5 years it was $1,7 \pm 0,7$ mm and during 8 years $1,6 \pm 0,9$ mm.



The final stage. The tooth after reverse retention repair and implant introduction

The degree of atrophy correlates with intensive smoking habits ($r = -0,54$, $p < 0,05$), daily use of alcohol ($r = -0,39$, $p < 0,05$), low calcium diet ($r = -0,36$, $p < 0,05$). In 17 cases of root preservation and in 45 cases of teeth crown preparation with reverse retention were provided and the standard implantation procedure was conducted based on sufficient alveolar ridge size (width $6,3 \pm 1,7$ mm, height $12,0 \pm 0,8$ mm). In retromolar area the volume of alveolar plate in 3 cases there was insufficient bone's volume and the artificial grafts were used.



Example of use tooth root retention and classical method of augmentation

The results of this study suggest that method of reverse teeth retention could be successfully used before implantation procedures or another prosthetic technique.



Privat dental practice
Chernivtsi, Ukraine
Tel. +38 0372 526741
e-mail: office@kas.cv.ua