

Microtensile Bond Strength of Resin Cements Used with Different Ceramics

Language: English

Authors:

Tobias Mohs, Per Wappler, Dr. med. dent. Katrin Bekes, Prof. Dr. med. dent. Hans-Günter Schaller, Dr. med. dent. Christian Ralf Gernhardt

Martin-Luther-University Halle-Wittenberg, Department of Operative Dentistry and Periodontology

Date/Event/Venue:

September 26th -29th, 2007

42nd Annual Meeting of the Continental European (CED) and Israeli (ID) Divisions of the IADR
Thessaloniki

Introduction

A number of new self-etch adhesives have been developed to simplify clinical bonding procedure. The efficiency of these simplified bonding systems is still controversia (1). Most of the published reports used these dentin adhesives as recommended by the manufacturer and in combination with one composite material (2-4). Actually, these self-etching dentin adhesive systems are also available as dual-curing systems (Fig. 1-4). However, the adhesive properties of the new, all-in-one system (Futurabond DC) used as light-curing and dualcuring system in combination with the dual curing resin cement Bifix (Voco, Germany) have not yet been extensively reported.

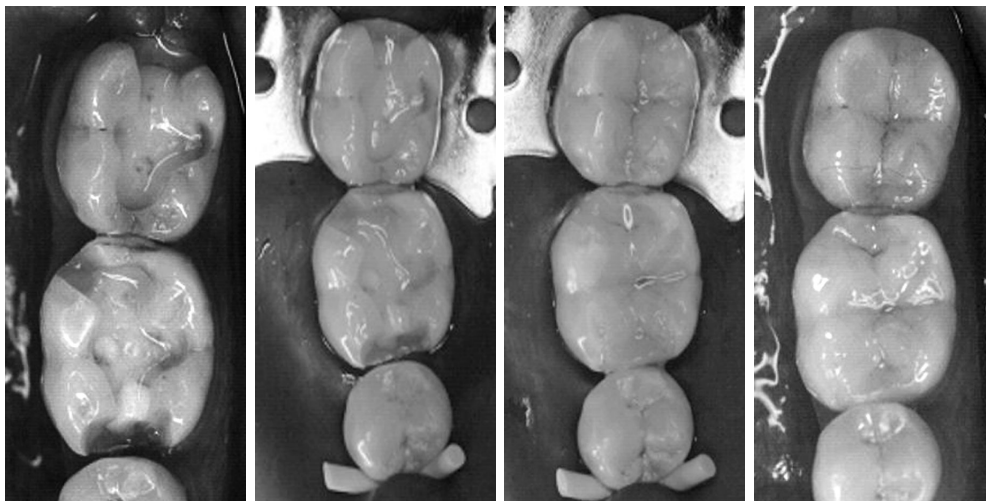


Fig. 1: Clinical procedure in adhesive dentistry. The prepared cavities before cementation of two IPS Empress inlays.

Fig. 2: Clinical procedure in adhesive dentistry. The prepared cavities after rubberdam placement.

Fig. 3: Two IPS Empress inlays were inserted using a dual curing resin cement in combination with Futurbond DC.

Fig. 4: Clinical procedure in adhesive dentistry. Final result after cementation of two IPS Empress inlays.

Objectives

The aim of this study was to evaluate microtensile bond strength of different ceramics (Empress (lithium-disilicated based all ceramic) and Cercon (zirconia based ceramic) compared with a light- and self-curing resin cement (Futurabond DC, Bifix) cements (Fig. 5, 6).



Fig. 5: The dentin adhesive system Futurabond DC used in this investigation.



Fig. 6: The resin cement Bifix QM used in this investigation.

Material and Methods

Sixty ceramic blocks (30 Empress, 30 Cercon) were made with standardized dimensions (length 5 mm, diameter 1 mm) (Fig. 8). Ninety freshly extracted third molars were included in this study. All teeth were specially prepared allowing the simulation of dentin perfusion (Fig. 7).

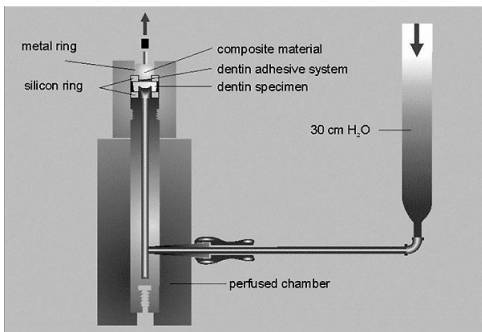


Fig. 7: Special designed apparatus to test tensile bond strength under permanent dentin perfusion.

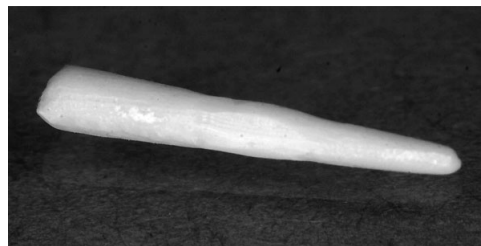


Fig. 8: Ceramic specimen. It fits exactly in the experimental device.

The specimens were randomly assigned to six experimental groups of fifteen each: Group O-l: Bifix, light-curing (Control Group); O-s: Bifix, self-curing (Control Group); Group C-l: Bifix, Cercon, light-curing; C-s: Bifix, Cercon, self-curing; E-l: Bifix, Empress, light-curing, E-s: Bifix, Empress, self-curing. Microtensile bond strength of the above mentioned material combinations was measured using an universal testing machine (Fig. 5-10).



Fig. 9: Experimental device after loading until fracture.

Fig. 10: All Empress specimens were conditioned using hydrofluoric acid prior to cementation.

Results

For the six test series following microtensile bond strengths were evaluated (mean value and standard deviation in Mpa). Group O-l: 24.56 (\pm 7.63); group O-s: 14.25 (\pm 3.48); group C-l: 23.18 (\pm 4.00); group C-s: 15.58 (\pm 2.38); group E-l: 22.56 (\pm 4.46); group E-s: 15.93 (\pm 3.67). The results of all groups are graphically expressed in figure 11. Statistical analysis showed a significant influence of the used curing modality on microtensile bond strength ($p < 0.001$, ANOVA). The highest bond strengths were evaluated in the light-curing groups (O-l, C-l, E-l). Pairwise comparison showed a significant reduction of bond strength in specimen treated with the self-curing resin cement compared to the light-cured groups. Between the different types of ceramic no statistic differences could be detected ($p < 0.05$, Tukey's test).

Group	O-l	O-s	C-l	C-s	E-l	E-s
Bond Strength	24.56	14.25	23.18	15.58	22.56	15.93
Standard deviation	7.63	3.48	4.00	2.38	4.46	3.67

Table 1: Microtensile bond strength of all groups in megapascals.

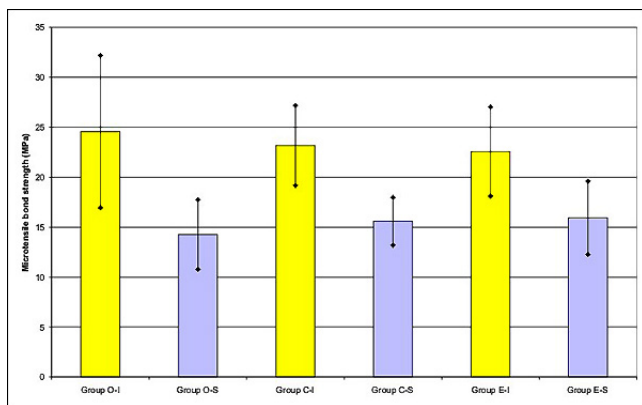


Fig. 11: Graphically expression of the results (Mean values and standard deviation in MPa).

Conclusions

Regardless of the curing modality, it was possible to establish bond strengths in every experimental group. Nevertheless, in the self-curing groups significant lower bond strength were evaluated.

Literature

1. Frankenberger R, Tay FR: Self-etch vs etch-and-rinse adhesives: effect of thermo-mechanical fatigue loading on marginal quality of bonded resin composite restorations. *Dent Mater* (2005) 21:397-412.
2. Guéders AM, Charpentier JF, Albert AI, Geerts SO: Microleakage after thermocycling of 4 etch and rinse and 3 self-etch adhesives with and without a flowable composite lining. *Oper Dent* (2006) 31:450-455.
3. Ishikawa A, Shimada Y, Foxton RM, Tagami J: Micro-tensile and micro-shear bond strengths of current self-etch adhesives to enamel and dentin. *Am J Dent* (2007) 20:161-166.


4. Hurmuzlu F, Ozdemir AK, Hubbezoglu I, Coskun A, Siso SH: Bond strength of adhesives to dentin involving total and self-etch adhesives. Quintessence Int (2007) 38:206-212.

This Poster was submitted by Dr. Christian Gernhardt.

Correspondence address:

Dr. Christian Gernhardt
 Martin-Luther-University Halle-Wittenberg
 Department of Operative Dentistry and Periodontology
 Große Steinstraße 19
 D-06108 Halle
 Germany

Poster Faksimile:



Martin-Luther-University Halle-Wittenberg

0183

Microtensile Bond Strength of Resin Cements Used with Different Ceramics

T. Mohs¹, P. Wappler¹, K. Bekes¹, H.-G. Schaller¹ and C.R. Gernhardt¹

¹Dept. of Operative Dentistry and Periodontology, University School of Dental Medicine, Martin-Luther-University Halle-Wittenberg, Halle, Germany

Introduction

A number of new self-etch adhesives have been developed to simplify clinical bonding procedure. The efficiency of these simplified bonding systems is still controversial. Most of the published reports used these dentin adhesives as recommended by the manufacturer and in combination with one composite material¹. Actually, these self-etching dentin adhesive systems are also available as dual-curing systems. However, the adhesive properties of the new, all-in-one systems used as light-curing and dual-curing system in combination with the dual curing resin cement Bifix (Voco, Germany) have not yet been extensively reported. The aim of this study was to evaluate microtensile bond strength between different ceramics (Empress (lithium-disilicated based all ceramic) and Cercon (zirconia based ceramic) and a light- and self-curing resin cement (Bifix) cements.

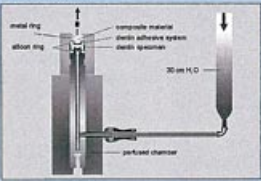


Fig. 1: Experimental device after loading until fracture.




Fig. 4: Clinical procedure in adhesive dentistry. Two IPS Empress inlays were inserted using a dual-curing resin cement in combination with Pufurbond DC.

Results

For the six test series following microtensile bond strengths were evaluated (mean value and standard deviation in Mpa). The results of all groups are presented in table 1 and graphically expressed in figure 10.

Statistical analysis showed a significant influence of the used curing modality on microtensile bond strength (p< 0.001, ANOVA). The highest bond strengths were evaluated in the light-curing groups (O-I, C-I, E-I). Pairwise comparison showed a significant reduction of bond strength in specimen treated with the self-curing resin cement compared to the light-cured groups. Between the different types of ceramic no statistic differences could be detected (p< 0.05, Tukey's test).

Group	O-I	O-S	C-I	C-S	E-I	E-S
Bond Strength	24,58	14,25	23,18	15,58	22,56	15,93
Standard deviation	7,63	3,48	4,00	2,38	4,46	3,67

Tab. 1: Microtensile bond strength of all groups in megapascals.

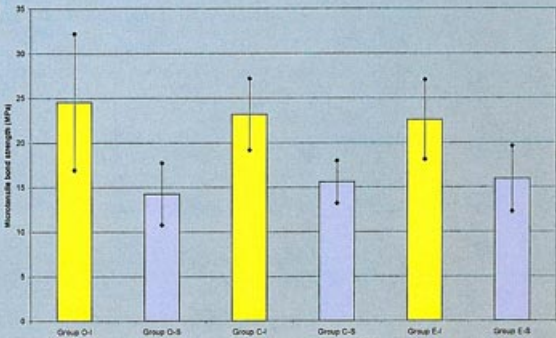


Fig. 10: Graphically expression of the results (Mean values and standard deviation in MPa).

Material and Methods

Sixty ceramic blocks (30 Empress, 30 Cercon) were made with standardized dimensions (length 5 mm, diameter 1 mm). Ninety freshly extracted third molars were included in this study. All teeth were specially prepared allowing the simulation of dentin perfusion. The specimens were randomly assigned to six experimental groups of fifteen each: Group O-I: Bifix, light-curing (Control Group); O-S: Bifix, self-curing (Control Group); Group C-I: Bifix, Cercon, light-curing; C-S: Bifix, Cercon, self-curing; E-I: Bifix, Empress, light-curing; E-S: Bifix, Empress, self-curing. Microtensile bond strength of the above mentioned material combinations was measured using an universal testing machine.




Fig. 5: Dentin adhesive systems and composite materials used in this investigation.




Fig. 6: All Empress specimens were conditioned using hydrofluoric acid prior to cementation.

Conclusions

Regardless of the curing modality, it was possible to establish bond strengths in every experimental group. Nevertheless, in the self-curing groups significant lower bond strength were evaluated.

References

1. Frankenberger R, Tay FR: Self-etch vs etch-and-rinse adhesives: effect of thermo-mechanical fatigue loading on marginal quality of bonded resin composite restorations. Dent Mater (2005) 21:397-412.
2. Guelders AM, Charpentier JF, Albert AJ, Geerts SO: Microleakage after thermocycling of 4 etch and rinse and 3 self-etch adhesives with and without a flowable composite lining. Oper Dent (2006) 31:450-5.
3. Ishikawa A, Shimada Y, Foxton RM, Tagami J: Micro-tensile and micro-shear bond strengths of current self-etch adhesives to enamel and dentin. Am J Dent (2007) 20:161-6.
4. Hurmuzlu F, Ozdemir AK, Hubbezoglu I, Coskun A, Siso SH: Bond strength of adhesives to dentin involving total and self-etch adhesives. Quintessence Int (2007) 38:E206-12.

Correspondence:
 Tobias Mohs, Dr. Christian Gernhardt, Martin-Luther-University Halle-Wittenberg, Department of Operative Dentistry and Periodontology, University School of Dental Medicine, Große Steinstraße 19, D-06108 Halle, Germany. E-Mail: tobias.mohs@medizin.uni-halle.de

42nd Annual Meeting of the Continental European (CE) and (IADR) Divisions of the IADR, September 26th-29th, 2007, Thessaloniki, Greece