

Int Poster J Dent Oral Med 2012, Vol 14 No 1, Poster 574

Esthetics

Illusion or Reality?

Language: English

Authors:

PG student Dr. Minal Daga, Prof. Dr. Shashit Shetty B., Reader Dr. B. Gurudutt Nayak, Reader Dr. Manoj Hans, B. R. Ambedkar University Agra, K. D. Dental College and Hospital, Department of Conservative Dentistry and Endodontics, Mathura, Uttar Pradesh, India

Date/Event/Venue:

9th to 12th December, 2012
25th FODI & 18th IES National Conference
Chennai, Tamilnadu, India

Illusion consists of changing perception to cause a tooth to appear different from what it actually is. Illusion enhances realism using three techniques:

Shaping & Contouring

Thinning Illusion

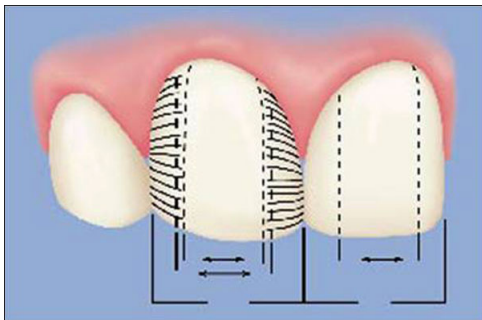


Fig. 1



Fig. 2

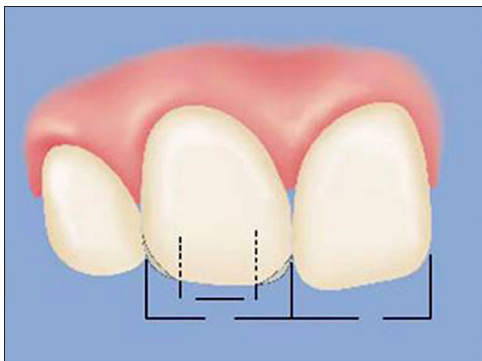


Fig. 3

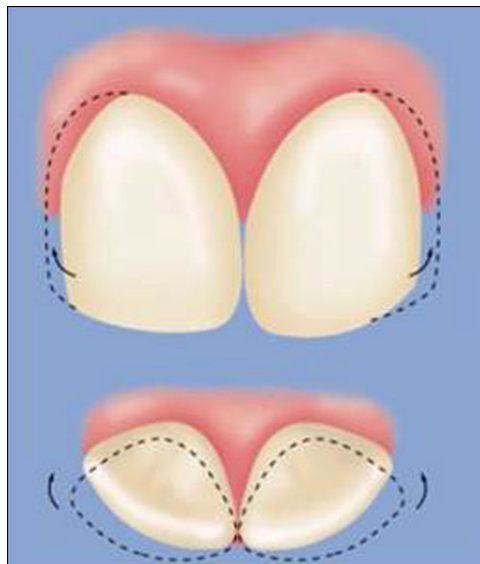


Fig. 4

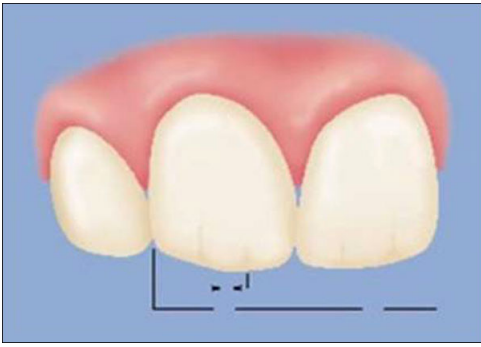


Fig. 5

Fig. 6



Fig. 7

Fig. 8

Arrangement of teeth

Widening Illusion

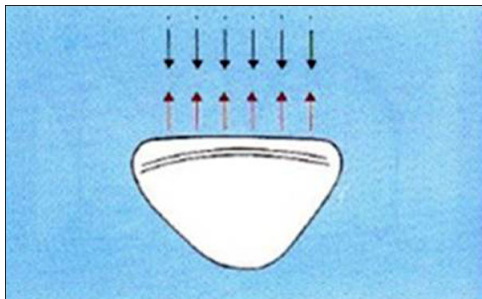
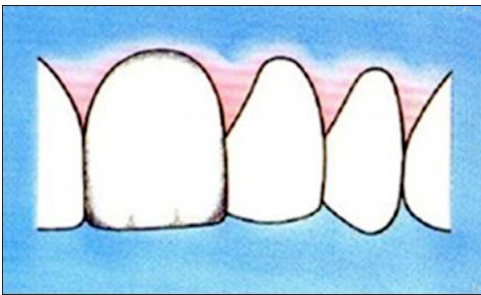


Fig. 9

Fig. 10

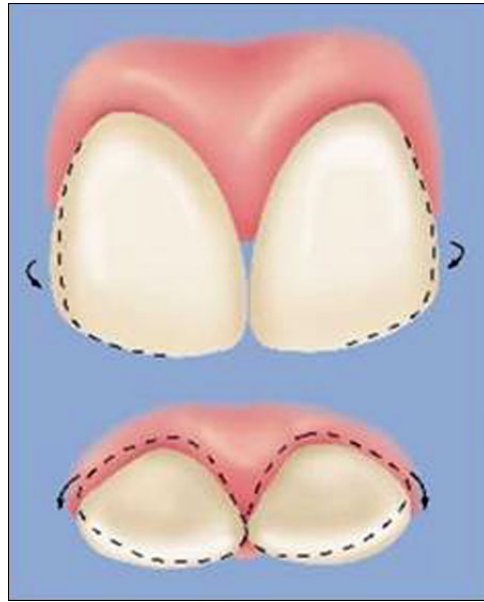


Fig. 11

Fig. 12

Shortening Illusion

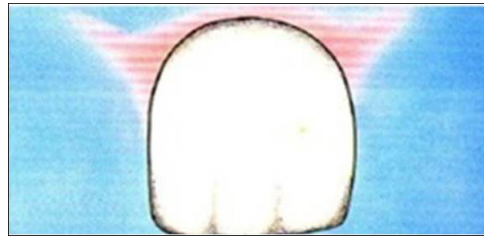
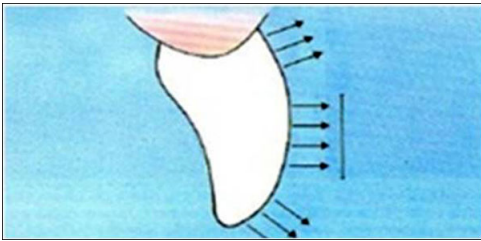


Fig. 13

Fig. 14

Staining

Lengthening Illusion

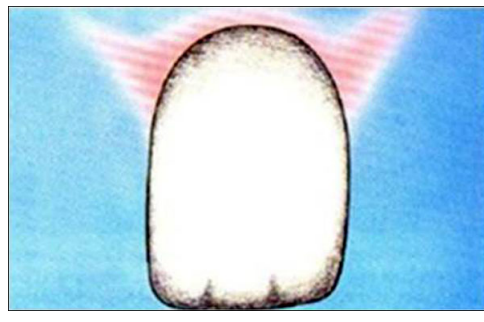
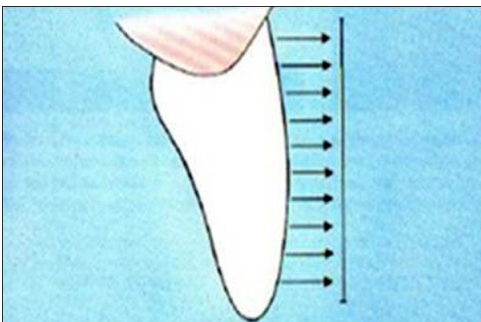


Fig. 15

Fig. 16

Ageing Illusion



Fig. 17



Fig. 18

Younger Illusion



Fig. 19

Esthetics and function go hand in hand. The better the esthetics the better the function is likely to be and vice versa. Thus illusion enhances esthetics by conservative means.

This Poster was submitted by [Dr. Minal Daga](#).

Correspondence address:

[Dr. Minal Daga](#)

B. R. Ambedkar University Agra

K. D. Dental College and Hospital, Department of Conservative Dentistry and Endodontics

Room No. 4, P.O. Chittikara, NH-2, Delhi-Mathura Highway

Mathura, Uttar Pradesh-281001

India

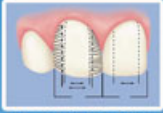
ESTHETICS: ILLUSION OR REALITY ?

Illusion consists of changing perception to cause a tooth to appear different from what it actually is.

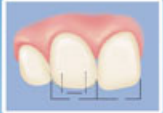
Illusion enhances realism using three techniques

Shaping & Contouring

Thinning Illusion



Mesial & distal line angles curved lingually



Gentle curving mesioincisal & distoincisal edges



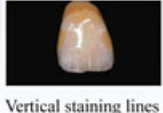
Distal aspect of teeth rotated lingually



Prominent cervical line



Bluish tint at the incisal aspect



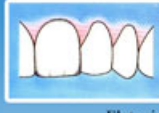
Vertical staining lines



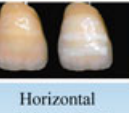
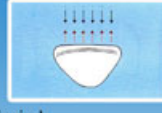
Bluish tint at the incisal aspect

Arrangement of teeth

Widening Illusion



Flattening incisal aspect mesiodistally

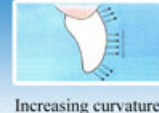


Horizontal staining lines



Mesial aspect of teeth rotated labially

Shortening Illusion



Increasing curvature on facial surface



Shallow cervical line

Staining

Lengthening Illusion



Flattening facial surface



Ageing Illusion



Dark brown spots on the cervical & incisal aspect



Younger Illusion



Incisal hallowing effect

Esthetics and function go hand in hand. The better the esthetics the better the function is likely to be and vice versa. *Dr. Minal Daga*
Thus Illusion enhances esthetics by conservative means.